

For Research Use Only

# DOCK8 Recombinant antibody, PBS Only



Catalog Number: 83270-2-PBS

## Basic Information

<b>Catalog Number:</b> 83270-2-PBS	<b>GenBank Accession Number:</b> BC019102	<b>Purification Method:</b> Protein A purification
<b>Size:</b> 1mg/ml	<b>GeneID (NCBI):</b> 81704	<b>CloneNo.:</b> 230441A2
<b>Source:</b> Rabbit	<b>UNIPROT ID:</b> Q8NF50	
<b>Isotype:</b> IgG	<b>Full Name:</b> dedicator of cytokinesis 8	
<b>Immunogen Catalog Number:</b> AG34585	<b>Calculated MW:</b> 2031 aa, 231 kDa	
	<b>Observed MW:</b> 239 kDa	

## Applications

**Tested Applications:**  
Indirect ELISA, IF/ICC, IHC, WB

**Species Specificity:**  
human

## Background Information

DOCK8 is a member of the DOCK family of proteins, which have a unique DRH2 domain enabling them to act as GEFs and so controlling a range of cellular processes in various signaling pathways (PMID: 12432077). The specific target of DOCK8 is Cell division control protein 42 homolog (Cdc42), a small GTPase that is involved in regulation of the cell cycle and forms a complex. DOCK8 also acts as a scaffold molecule in this complex that initiates actin polymerization via the Wiskott-Aldrich Syndrome protein (WASp) (PubMed: 28028151, PubMed: 22461490).

## Storage

**Storage:**  
Store at -80°C.  
**The product is shipped with ice packs. Upon receipt, store it immediately at -80°C**

**Storage Buffer:**  
PBS Only

For technical support and original validation data for this product please contact:

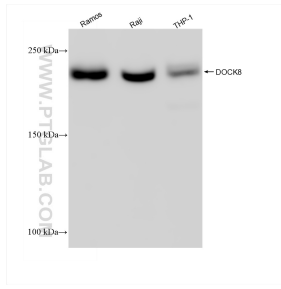
T: 4006900926

E: [Proteintech-CN@ptglab.com](mailto:Proteintech-CN@ptglab.com)

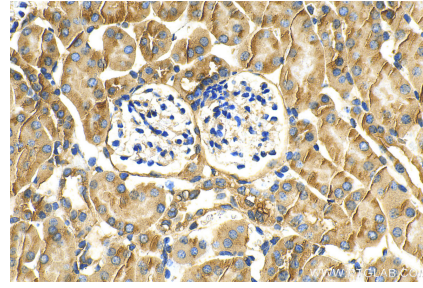
W: [ptgcn.com](http://ptgcn.com)

**This product is exclusively available under Proteintech Group brand and is not available to purchase from any other manufacturer.**

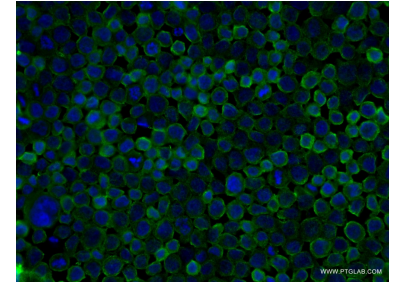
## Selected Validation Data



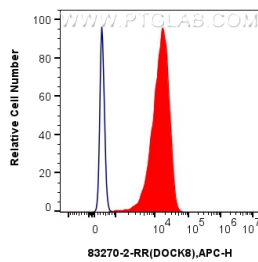
Various lysates were subjected to SDS PAGE followed by western blot with 83270-2-RR (DOCK8 antibody) at dilution of 1:10000 incubated at room temperature for 1.5 hours. This data was developed using the same antibody clone with 83270-2-PBS in a different storage buffer formulation.



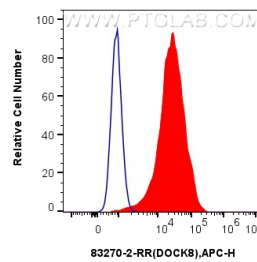
Immunohistochemical analysis of paraffin-embedded mouse kidney tissue slide using 83270-2-RR (DOCK8 antibody) at dilution of 1:200 (under 40x lens). Heat mediated antigen retrieval with Tris-EDTA buffer (pH 9.0). This data was developed using the same antibody clone with 83270-2-PBS in a different storage buffer formulation.



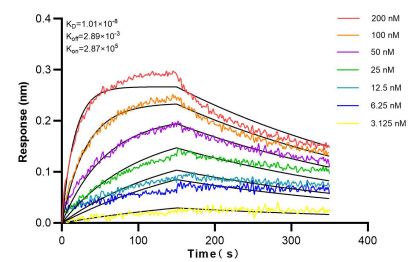
Immunofluorescent analysis of (4% PFA) fixed THP-1 cells using DOCK8 antibody (83270-2-RR, Clone: 230441A2 ) at dilution of 1:200 and CoraLite®488-Conjugated AffiniPure Goat Anti-Rabbit IgG(H+L) (SA00013-2). This data was developed using the same antibody clone with 83270-2-PBS in a different storage buffer formulation.



$1 \times 10^6$  THP-1 cells were intracellularly stained with 0.25 ug DOCK8 Recombinant antibody (83270-2-RR, Clone:230441A2) and APC-Conjugated AffiniPure Goat Anti-Rabbit IgG(H+L)(red), or 0.25 ug Rabbit IgG control Rabbit PolyAb (30000-0-AP) (blue). Cells were fixed with 4% PFA and permeabilized with Flow Cytometry Perm Buffer (PF00011-C). This data was developed using the same antibody clone with 83270-2-PBS in a different storage buffer formulation.



$1 \times 10^6$  HeLa cells were intracellularly stained with 0.25 ug DOCK8 Recombinant antibody (83270-2-RR, Clone:230441A2) and APC-Conjugated AffiniPure Goat Anti-Rabbit IgG(H+L)(red), or 0.25 ug Rabbit IgG control Rabbit PolyAb (30000-0-AP) (blue). Cells were fixed with 4% PFA and permeabilized with Flow Cytometry Perm Buffer (PF00011-C). This data was developed using the same antibody clone with 83270-2-PBS in a different storage buffer formulation.



Biolayer interferometry (BLI) kinetic assays of 83270-2-RR against Human DOCK8 were performed. The affinity constant is 10.1 nM.