

For Research Use Only

DOCK8 Recombinant antibody

Catalog Number:83270-2-RR



Basic Information

Catalog Number: 83270-2-RR	GenBank Accession Number: BC019102	Purification Method: Protein A purification
Size: 1000 ug/ml	GeneID (NCBI): 81704	CloneNo.: 230441A2
Source: Rabbit	UNIPROT ID: Q8NF50	Recommended Dilutions: WB 1:5000-1:50000 IHC 1:50-1:500 IF/ICC 1:50-1:500
Isotype: IgG	Full Name: dedicator of cytokinesis 8	
Immunogen Catalog Number: AG34585	Calculated MW: 2031 aa, 231 kDa	
	Observed MW: 239 kDa	

Applications

Tested Applications:
WB, IHC, IF/ICC, FC (Intra), ELISA

Species Specificity:
human

Note-IHC: suggested antigen retrieval with TE buffer pH 9.0; (*) Alternatively, antigen retrieval may be performed with citrate buffer pH 6.0

Positive Controls:

WB : Ramos cells, Raji cells, THP-1 cells

IHC : mouse kidney tissue,

IF/ICC : THP-1 cells,

Background Information

DOCK8 is a member of the DOCK family of proteins, which have a unique DRH2 domain enabling them to act as GEFs and so controlling a range of cellular processes in various signaling pathways (PMID: 12432077). The specific target of DOCK8 is Cell division control protein 42 homolog (Cdc42), a small GTPase that is involved in regulation of the cell cycle and forms a complex. DOCK8 also acts as a scaffold molecule in this complex that initiates actin polymerization via the Wiskott-Aldrich Syndrome protein (WASp) (PubMed: 28028151, PubMed: 22461490).

Storage

Storage:
Store at -20°C. Stable for one year after shipment.
Storage Buffer:
PBS with 0.02% sodium azide and 50% glycerol pH 7.3.
Aliquoting is unnecessary for -20°C storage

For technical support and original validation data for this product please contact:

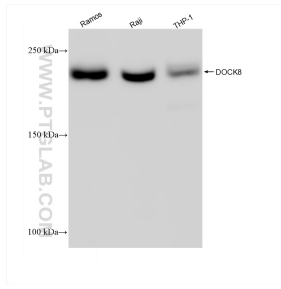
T: 4006900926

E: Proteintech-CN@ptglab.com

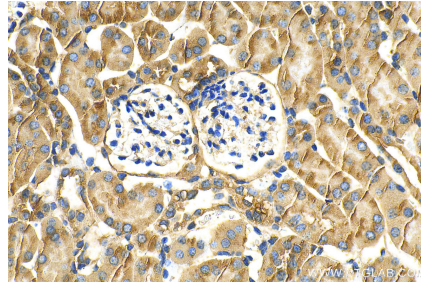
W: ptgcn.com

This product is exclusively available under Proteintech Group brand and is not available to purchase from any other manufacturer.

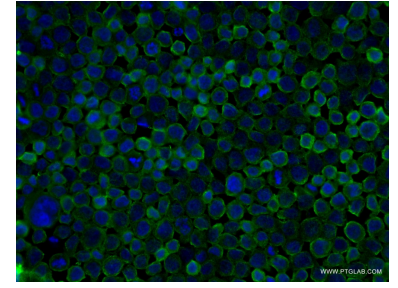
Selected Validation Data



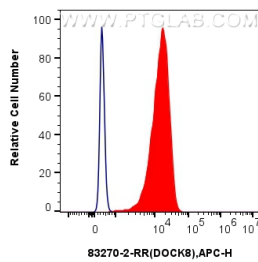
Various lysates were subjected to SDS PAGE followed by western blot with 83270-2-RR (DOCK8 antibody) at dilution of 1:10000 incubated at room temperature for 1.5 hours.



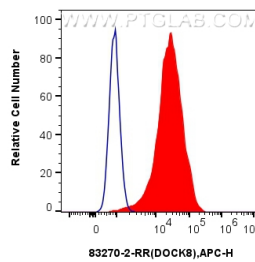
Immunohistochemical analysis of paraffin-embedded mouse kidney tissue slide using 83270-2-RR (DOCK8 antibody) at dilution of 1:200 (under 40x lens). Heat mediated antigen retrieval with Tris-EDTA buffer (pH 9.0).



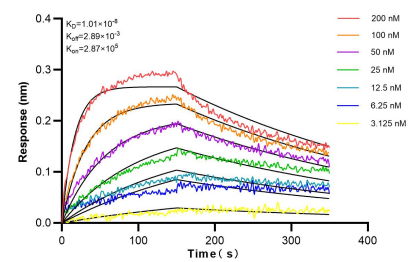
Immunofluorescent analysis of (4% PFA) fixed THP-1 cells using DOCK8 antibody (83270-2-RR, Clone: 230441A2) at dilution of 1:200 and CoraLite®488-Conjugated AffiniPure Goat Anti-Rabbit IgG(H+L) (SA00013-2).



1×10^6 THP-1 cells were intracellularly stained with 0.25 μ g DOCK8 Recombinant antibody (83270-2-RR, Clone:230441A2) and APC-Conjugated AffiniPure Goat Anti-Rabbit IgG(H+L)(red), or 0.25 μ g Rabbit IgG control Rabbit PolyAb (30000-0-AP) (blue). Cells were fixed with 4% PFA and permeabilized with Flow Cytometry Perm Buffer (PF00011-C).



1×10^6 HeLa cells were intracellularly stained with 0.25 μ g DOCK8 Recombinant antibody (83270-2-RR, Clone:230441A2) and APC-Conjugated AffiniPure Goat Anti-Rabbit IgG(H+L)(red), or 0.25 μ g Rabbit IgG control Rabbit PolyAb (30000-0-AP) (blue). Cells were fixed with 4% PFA and permeabilized with Flow Cytometry Perm Buffer (PF00011-C).



Biolayer interferometry (BLI) kinetic assays of 83270-2-RR against Human DOCK8 were performed. The affinity constant is 10.1 nM.