

For Research Use Only

IGFBP7 Recombinant antibody, PBS Only (Capture)

Catalog Number:83292-6-PBS



Basic Information

Catalog Number:

83292-6-PBS

Size:

1 mg/ml

Source:

Rabbit

Isotype:

IgG

GenBank Accession Number:

NM_001553.2

GeneID (NCBI):

3490

UNIPROT ID:

Q16270-1

Full Name:

insulin-like growth factor binding protein 7

Calculated MW:

29 kDa

Purification Method:

Protein A purification

CloneNo.:

240228A2

Applications

Tested Applications:

Sandwich ELISA, Indirect ELISA, Sample test

Species Specificity:

human

Background Information

Storage

Storage:

Store at -80°C.

The product is shipped with ice packs. Upon receipt, store it immediately at -80°C

Storage Buffer:

PBS Only

For technical support and original validation data for this product please contact:

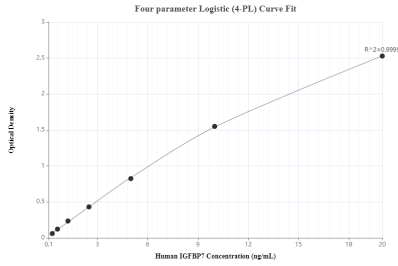
T: 4006900926

E: Proteintech-CN@ptglab.com

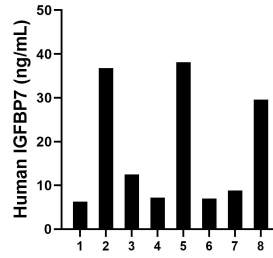
W: ptgcn.com

This product is exclusively available under Proteintech Group brand and is not available to purchase from any other manufacturer.

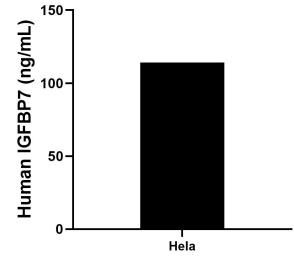
Selected Validation Data



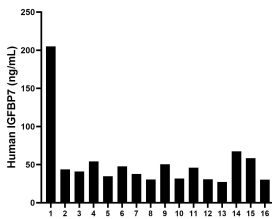
Sandwich ELISA standard curve of MP00319-4, Human IGFBP7 Monoclonal Matched Antibody Pair - PBS only. 83292-6-PBS was coated to a plate as the capture antibody and incubated with serial dilutions of standard Eg0815. 83292-7-PBS was HRP conjugated as the detection antibody. Range: 0.313-20 ng/mL



Urine of eight individual healthy human donors was measured. The human IGFBP7 concentration of detected samples was determined to be 18.3 ng/mL with a range of 6.3 - 38.1 ng/mL.



HeLa were cultured in DMEM supplemented with 10% fetal bovine serum, 2.5 mM L-glutamine, 100 U/mL penicillin, and 100 µg/mL streptomycin sulfate. An aliquot of the cell culture supernatants was removed, assayed for human IGFBP7, and measured 114.2 ng/mL.



Serum of sixteen individual healthy human donors were measured. The human IGFBP7 concentration of detected samples was determined to be 52.3 ng/mL with a range of 27.4 - 205.1 ng/mL.