

For Research Use Only

# IGFBP7 Recombinant antibody, PBS Only (Detector)

Catalog Number:83292-7-PBS



## Basic Information

<b>Catalog Number:</b> 83292-7-PBS	<b>GenBank Accession Number:</b> NM_001553.2	<b>Purification Method:</b> Protein A purification
<b>Size:</b> 1 mg/ml	<b>GeneID (NCBI):</b> 3490	<b>CloneNo.:</b> 240228B5
<b>Source:</b> Rabbit	<b>UNIPROT ID:</b> Q16270-1	
<b>Isotype:</b> IgG	<b>Full Name:</b> insulin-like growth factor binding protein 7	
	<b>Calculated MW:</b> 29 kDa	

## Applications

**Tested Applications:**  
Sandwich ELISA, Indirect ELISA, Sample test

**Species Specificity:**  
human

## Background Information

### Storage

**Storage:**  
Store at -80°C.  
**The product is shipped with ice packs. Upon receipt, store it immediately at -80°C**

**Storage Buffer:**  
PBS Only

For technical support and original validation data for this product please contact:

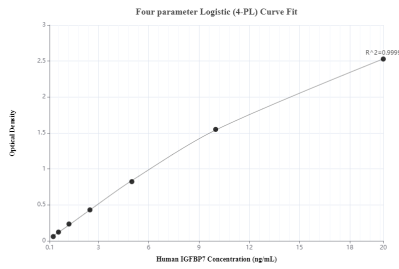
T: 4006900926

E: [Proteintech-CN@ptglab.com](mailto:Proteintech-CN@ptglab.com)

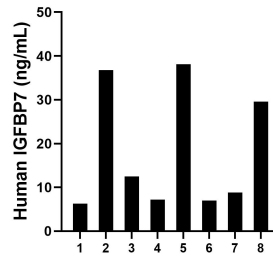
W: [ptgcn.com](http://ptgcn.com)

**This product is exclusively available under Proteintech Group brand and is not available to purchase from any other manufacturer.**

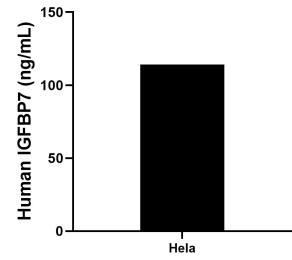
## Selected Validation Data



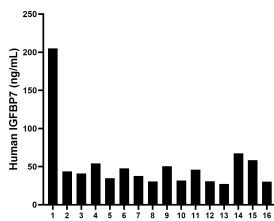
Sandwich ELISA standard curve of MP00319-4, Human IGFBP7 Monoclonal Matched Antibody Pair - PBS only. 83292-6-PBS was coated to a plate as the capture antibody and incubated with serial dilutions of standard Eg0815. 83292-7-PBS was HRP conjugated as the detection antibody. Range: 0.313-20 ng/mL



Urine of eight individual healthy human donors was measured. The human IGFBP7 concentration of detected samples was determined to be 18.3 ng/mL with a range of 6.3 - 38.1 ng/mL.



HeLa were cultured in DMEM supplemented with 10% fetal bovine serum, 2.5 mM L-glutamine, 100 U/mL penicillin, and 100  $\mu$ g/mL streptomycin sulfate. An aliquot of the cell culture supernatants was removed, assayed for human IGFBP7, and measured 114.2 ng/mL.



Serum of sixteen individual healthy human donors were measured. The human IGFBP7 concentration of detected samples was determined to be 52.3 ng/mL with a range of 27.4 - 205.1 ng/mL.