

For Research Use Only

# GIN51 Recombinant antibody

Catalog Number:83293-1-RR



## Basic Information

Catalog Number:

83293-1-RR

Size:

1000 ug/ml

Source:

Rabbit

Isotype:

IgG

Immunogen Catalog Number:

AG8895

GenBank Accession Number:

BC012542

GeneID (NCBI):

9837

UNIPROT ID:

Q14691

Full Name:

GIN5 complex subunit 1 (Psf1 homolog)

Calculated MW:

196 aa, 23 kDa

Observed MW:

20 kDa

Purification Method:

Protein A purification

CloneNo.:

240234A2

Recommended Dilutions:

WB 1:5000-1:50000

## Applications

Tested Applications:

WB, ELISA

Species Specificity:

human

Positive Controls:

WB : Jurkat cells, HeLa cells, HepG2 cells

## Background Information

GIN51, also known as Partner of SLD Five 1 (PSF1) is a member of the GINS (Go-Ichi-Nii-San) complex, which plays a vital role in the initiation and elongation of DNA replication (PMID: 34414190). GIN51 was initially found to be predominantly expressed in highly proliferating cells instead of mature cells. Later on, it was found that GIN5 was involved in the tumorigenesis of various cancers, including breast cancer, colorectal cancer, and hepatocellular carcinoma (PMID: 36065190).

## Storage

Storage:

Store at -20°C. Stable for one year after shipment.

Storage Buffer:

PBS with 0.02% sodium azide and 50% glycerol pH 7.3.

Aliquoting is unnecessary for -20°C storage

For technical support and original validation data for this product please contact:

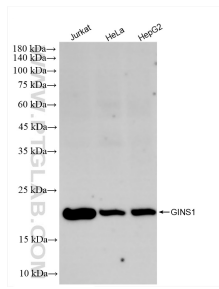
T: 4006900926

E: Proteintech-CN@ptglab.com

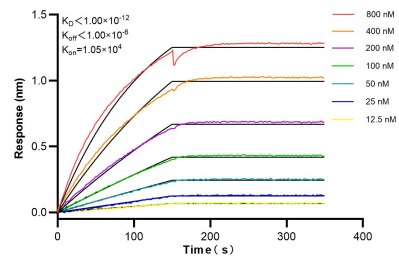
W: ptgcn.com

This product is exclusively available under Proteintech Group brand and is not available to purchase from any other manufacturer.

## Selected Validation Data



Various lysates were subjected to SDS PAGE followed by western blot with 83293-1-RR (GINS1 antibody) at dilution of 1:10000 incubated at room temperature for 1.5 hours.



Biolayer interferometry (BLI) kinetic assays of 83293-1-RR against Human GINS1 were performed. The affinity constant is below 1 pM.