

For Research Use Only

FGD6 Recombinant antibody

Catalog Number:83296-4-RR



Basic Information

Catalog Number:

83296-4-RR

Size:

1000 ug/ml

Source:

Rabbit

Isotype:

IgG

Immunogen Catalog Number:

AG22211

GenBank Accession Number:

BC013319

GeneID (NCBI):

55785

UNIPROT ID:

Q6ZV73

Full Name:

FYVE, RhoGEF and PH domain containing 6

Calculated MW:

1430 aa, 161 kDa

Observed MW:

161 kDa

Purification Method:

Protein A purification

CloneNo.:

240260A6

Recommended Dilutions:

WB 1:5000-1:50000

Applications

Tested Applications:

WB, ELISA

Species Specificity:

human

Positive Controls:

WB : K-562 cells, A549 cells, Jurkat cells, HeLa cells, HEK-293 cells

Background Information

FGD6, also known as ZFYVE24, is localized on the Homo sapiens chromosome 12q22 and consists of 1,400 amino acids. Previous studies have reported that variations in FGD6 increase individual susceptibility to polypoidal choroidal vasculopathy. It was also demonstrated that FGD6 coordinates cell polarity and endosomal membrane recycling in osteoclasts by regulating the assembly of different actin-based protein networks and activating Cdc42 at different locations.

Storage

Storage:

Store at -20°C. Stable for one year after shipment.

Storage Buffer:

PBS with 0.02% sodium azide and 50% glycerol pH 7.3.

Aliquoting is unnecessary for -20°C storage

For technical support and original validation data for this product please contact:

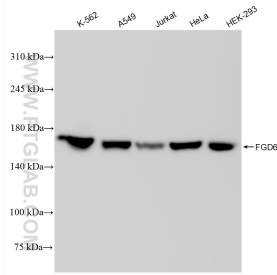
T: 4006900926

E: Proteintech-CN@ptglab.com

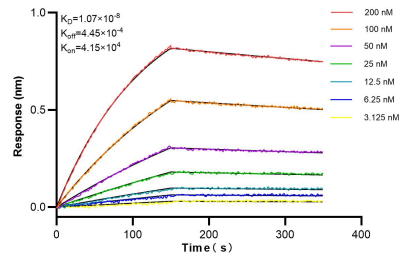
W: ptgcn.com

This product is exclusively available under Proteintech Group brand and is not available to purchase from any other manufacturer.

Selected Validation Data



Various lysates were subjected to SDS PAGE followed by western blot with 83296-4-RR (FGD6 antibody) at dilution of 1:10000 incubated at room temperature for 1.5 hours.



Biolayer interferometry (BLI) kinetic assays of 83296-4-RR against Human FGD6 were performed. The affinity constant is 10.7 nM.