

For Research Use Only

# BCDIN3D Recombinant antibody, PBS Only (Capture)

Catalog Number:83309-1-PBS



## Basic Information

<b>Catalog Number:</b> 83309-1-PBS	<b>GenBank Accession Number:</b> BC053560	<b>Purification Method:</b> Protein A purification
<b>Size:</b> 1 mg/ml	<b>GeneID (NCBI):</b> 144233	<b>CloneNo.:</b> 240152A9
<b>Source:</b> Rabbit	<b>UNIPROT ID:</b> Q7Z5W3	
<b>Isotype:</b> IgG	<b>Full Name:</b> BCDIN3 domain containing	
<b>Immunogen Catalog Number:</b> AG15613	<b>Calculated MW:</b> 292 aa, 33 kDa	
	<b>Observed MW:</b> 33 kDa	

## Applications

**Tested Applications:**  
WB, Cytometric bead array, Indirect ELISA

**Species Specificity:**  
human

## Background Information

BCDIN3D (BCDIN3 domain containing RNA methyltransferase), it is expected to be located in cytoplasm, which is ubiquitous expressed in prostate, lymph node and skeletal muscle. This gene encodes an RNA methyltransferase which belongs to the rossmann fold methyltransferase family and serves as a 5'-methylphosphate capping enzyme that is specific for cytoplasmic histidyl tRNA. The encoded protein contains an S-adenosylmethionine binding domain and uses the methyl group donor, S-adenosylmethionine. This gene is overexpressed in breast cancer cells, and is related to the tumorigenic phenotype and poor prognosis of breast cancer. The encoded protein is thought to promote the cellular invasion of breast cancer cells, by downregulating the expression of tumor suppressor miRNAs through the dimethylation of the 5-monophosphate of the corresponding precursor miRNAs. The molecular weight of BCDIN3D is 33 kDa.

## Storage

**Storage:**  
Store at -80°C.  
**The product is shipped with ice packs. Upon receipt, store it immediately at -80°C**

**Storage Buffer:**  
PBS Only

For technical support and original validation data for this product please contact:

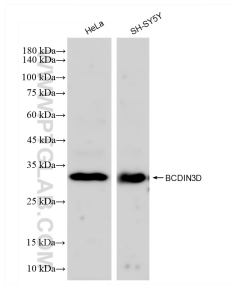
T: 4006900926

E: [Proteintech-CN@ptglab.com](mailto:Proteintech-CN@ptglab.com)

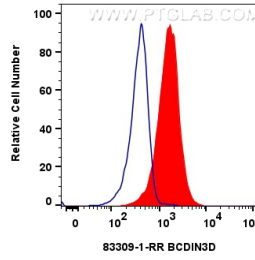
W: [ptgcn.com](http://ptgcn.com)

**This product is exclusively available under Proteintech Group brand and is not available to purchase from any other manufacturer.**

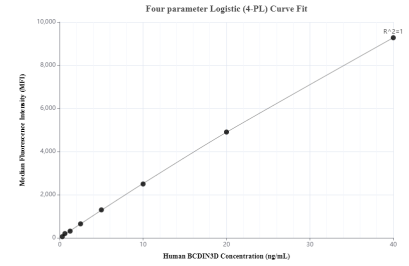
## Selected Validation Data



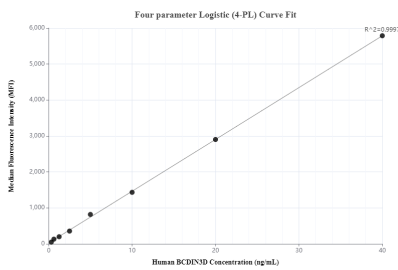
Various lysates were subjected to SDS PAGE followed by western blot with 83309-1-RR (BCDIN3D antibody) at dilution of 1:500 incubated at room temperature for 1.5 hours. This data was developed using the same antibody clone with 83309-1-PBS in a different storage buffer formulation.



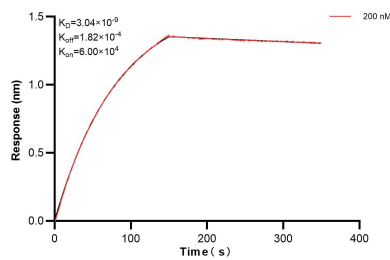
$1 \times 10^6$  HeLa cells were intracellularly stained with 0.25  $\mu$ g BCDIN3D Recombinant antibody (83309-1-RR, Clone:240152A9) and CoraLite® 488-Conjugated Goat Anti-Rabbit IgG(H+L) (SA00013-2) (red), or 0.25  $\mu$ g Control Antibody (blue). Cells were fixed with 4% PFA and permeabilized with Flow Cytometry Perm Buffer (PF00011-C). This data was developed using the same antibody clone with 83309-1-PBS in a different storage buffer formulation.



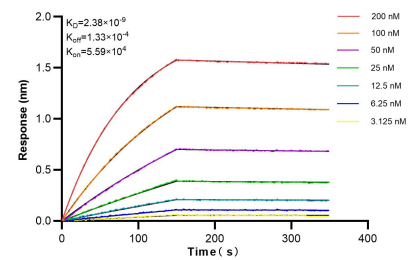
Cytometric bead array standard curve of MP00333-1, BCDIN3D Recombinant Matched Antibody Pair, PBS Only. Capture antibody: 83309-1-PBS. Detection antibody: 83309-3-PBS. Standard: Ag15613. Range: 0.313-40 ng/mL.



Cytometric bead array standard curve of MP00333-3, BCDIN3D Recombinant Matched Antibody Pair, PBS Only. Capture antibody: 83309-1-PBS. Detection antibody: 83309-4-PBS. Standard: Ag15613. Range: 0.313-40 ng/mL.



Biolayer interferometry (BLI) kinetic assay of 83309-1-PBS against Human BCDIN3D was performed. The affinity constant is 3.04 nM.



Biolayer interferometry (BLI) kinetic assays of 83309-1-RR against Human BCDIN3D were performed. The affinity constant is 2.38 nM.