

For Research Use Only

# COPS8 Recombinant antibody, PBS Only (Detector)

Catalog Number: 83312-1-PBS



## Basic Information

<b>Catalog Number:</b> 83312-1-PBS	<b>GenBank Accession Number:</b> BC003090	<b>Purification Method:</b> Protein A purification
<b>Size:</b> 1 mg/ml	<b>GeneID (NCBI):</b> 10920	<b>CloneNo.:</b> 240195B1
<b>Source:</b> Rabbit	<b>UNIPROT ID:</b> Q99627	
<b>Isotype:</b> IgG	<b>Full Name:</b> COP9 constitutive photomorphogenic homolog subunit 8 (Arabidopsis)	
<b>Immunogen Catalog Number:</b> AG0143	<b>Calculated MW:</b> 23 kDa	
	<b>Observed MW:</b> 23 kDa	

## Applications

**Tested Applications:**  
WB, IHC, IF/ICC, Cytometric bead array, Indirect ELISA

**Species Specificity:**  
human, mouse, rat

## Background Information

COPS8 is one of the eight subunits of COP9 signalosome, a highly conserved protein complex that functions as an important regulator in multiple signaling pathways. The structure and function of COP9 signalosome is similar to that of the 19S regulatory particle of 26S proteasome. COP9 signalosome has been shown to interact with SCF-type E3 ubiquitin ligases and act as a positive regulator of E3 ubiquitin ligases.

## Storage

**Storage:**  
Store at -80°C.  
**The product is shipped with ice packs. Upon receipt, store it immediately at -80°C**

**Storage Buffer:**  
PBS Only

For technical support and original validation data for this product please contact:

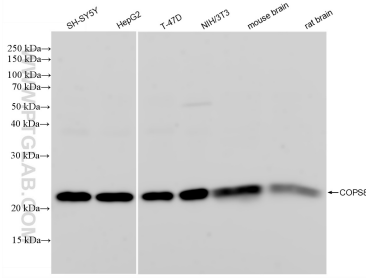
T: 4006900926

E: [Proteintech-CN@ptglab.com](mailto:Proteintech-CN@ptglab.com)

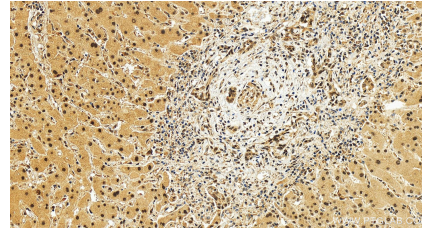
W: [ptgcn.com](http://ptgcn.com)

**This product is exclusively available under Proteintech Group brand and is not available to purchase from any other manufacturer.**

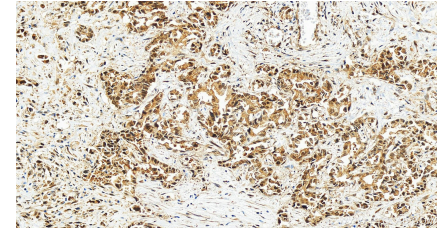
## Selected Validation Data



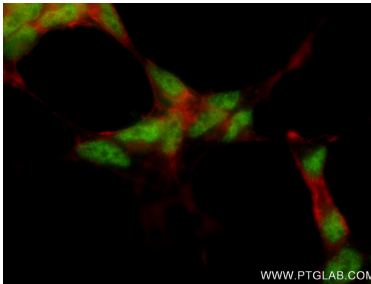
Various lysates were subjected to SDS PAGE followed by western blot with 83312-1-RR (COPS8 antibody) at dilution of 1:10000 incubated at room temperature for 1.5 hours. This data was developed using the same antibody clone with 83312-1-PBS in a different storage buffer formulation.



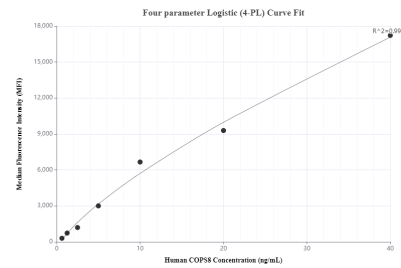
Immunohistochemical analysis of paraffin-embedded human intrahepatic cholangiocarcinoma tissue slide using 83312-1-RR (COPS8 antibody) at dilution of 1:250 (under 20x lens). Heat mediated antigen retrieval with Tris-EDTA buffer (pH 9.0). This data was developed using the same antibody clone with 83312-1-PBS in a different storage buffer formulation.



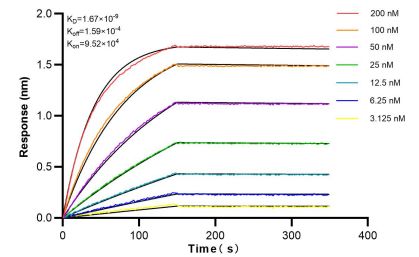
Immunohistochemical analysis of paraffin-embedded human intrahepatic cholangiocarcinoma tissue slide using 83312-1-RR (COPS8 antibody) at dilution of 1:250 (under 20x lens). Heat mediated antigen retrieval with Tris-EDTA buffer (pH 9.0). This data was developed using the same antibody clone with 83312-1-PBS in a different storage buffer formulation.



Immunofluorescent analysis of (4% PFA) fixed SH-SY5Y cells using COPS8 antibody (83312-1-RR, Clone: 240195B1) at dilution of 1:250 and CoraLite@488-Conjugated AffiniPure Goat Anti-Rabbit IgG(H+L) (SA00013-2), CL594-Phalloidin (red). This data was developed using the same antibody clone with 83312-1-PBS in a different storage buffer formulation.



Cytometric bead array standard curve of MP00336-2, COPS8 Recombinant Matched Antibody Pair, PBS Only. Capture antibody: 83312-2-PBS. Detection antibody: 83312-1-PBS. Standard: Ag0143. Range: 0.625-40 ng/mL.



Biolayer interferometry (BLI) kinetic assays of 83312-1-RR against Human COPS8 were performed. The affinity constant is 1.67 nM.