

NUPR1 Recombinant antibody

Catalog Number: 83315-2-RR

Basic Information

Catalog Number: 83315-2-RR	GenBank Accession Number: BC002434	Purification Method: Protein A purification
Size: 1000 µg/ml	GeneID (NCBI): 26471	CloneNo.: 240149G4
Source: Rabbit	UNIPROT ID: O60356	Recommended Dilutions: WB 1:500-1:2000
Isotype: IgG	Full Name: nuclear protein 1	
Immunogen Catalog Number: AG7039	Calculated MW: 8 kDa	
	Observed MW: 10 kDa	

Applications

Tested Applications: WB, ELISA	Positive Controls: WB : NCI-H1299 cells,
Species Specificity: Human	

Background Information

NUPR1, also named as COM1 and P8, is a small nuclear protein that is responsive to various stress stimuli. NUPR1 can be induced by hypoxia, oxidative stress, while the expression is low in physiological condition. It is associated with chemoresistance in multiple malignancies. The predicted MW of NUPR1 is 8 kDa, it also has another isoform of 10 kDa and we also detect bands around 17 and 38 kDa, which are similar to the papers (PMID: 29130426, 27336713, 28694771, 22961798). NUPR1 was also found in a complex with ANXA2, TRIM21, YBX1, S100A9, HSPA8, HSPA9, HSPA4, HSPA5, and ESR1, suggesting that these proteins might play a role in its functional regulation (PMID: 33542201), and it can also form a complex with PADI4 and plays crucial functions in modulating DNA-repair, favoring metastasis, or facilitating citrullination of other proteins (PMID: 36858171).

Storage

Storage:
Store at -20°C. Stable for one year after shipment.
Storage Buffer:
PBS with 0.02% sodium azide and 50% glycerol pH 7.3.
Aliquoting is unnecessary for -20°C storage

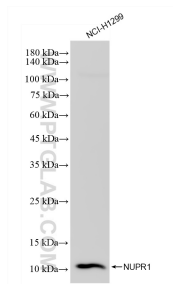
For technical support and original validation data for this product please contact:

T: 4006900926

E: Proteintech-CN@ptglab.comW: ptgcn.com

This product is exclusively available under Proteintech Group brand and is not available to purchase from any other manufacturer.

Selected Validation Data



NCI-H1299 cells were subjected to SDS PAGE followed by western blot with 83315-2-RR (NUPR1 antibody) at dilution of 1:1000 incubated at room temperature for 1.5 hours.