

For Research Use Only

ADRB2 Recombinant antibody

Catalog Number: 83317-5-RR



Basic Information

Catalog Number: 83317-5-RR	GenBank Accession Number: BC012481	Purification Method: Protein A purification
Size: 1000 µg/ml	GeneID (NCBI): 154	CloneNo.: 240186C9
Source: Rabbit	UNIPROT ID: P07550	Recommended Dilutions: IF 1:200-1:800
Isotype: IgG	Full Name: adrenergic, beta-2-, receptor, surface	
Immunogen Catalog Number: AG3715	Calculated MW: 46 kDa	

Applications

Tested Applications: IF/ICC, ELISA	Positive Controls: IF : A431 cells,
Species Specificity: Human	

Background Information

Beta-2 adrenergic receptor (ADRB2), a member of the G protein-coupled receptor (GPCR) family, binds epinephrine with an approximately 30-fold greater affinity than it does norepinephrine. ADRB2 is directly linked to one of its final effectors, the class C L-type Ca²⁺ channel, Cav1.2 (PMID: 11441182). This receptor-channel complex also contains a G protein, an adenylyl cyclase, cyclic adenosine monophosphate-dependent protein kinase (PKA), and a counteracting phosphatase, PP2A. Different polymorphic forms, point mutations, and/or downregulation of the gene of ADRB2 are associated with nocturnal asthma, obesity, and type 2 diabetes.

Storage

Storage:
Store at -20°C. Stable for one year after shipment.
Storage Buffer:
PBS with 0.02% sodium azide and 50% glycerol pH 7.3.
Aliquoting is unnecessary for -20°C storage

For technical support and original validation data for this product please contact:

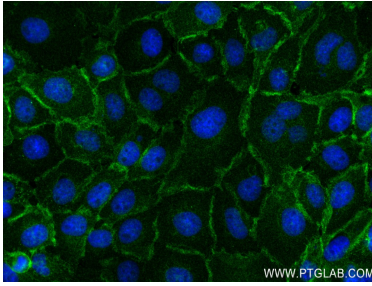
T: 4006900926

E: Proteintech-CN@ptglab.com

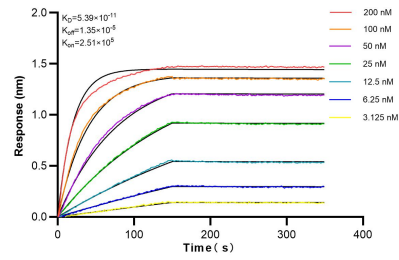
W: ptgcn.com

This product is exclusively available under Proteintech Group brand and is not available to purchase from any other manufacturer.

Selected Validation Data



Immunofluorescent analysis of (4% PFA) fixed A431 cells using ADRB2 antibody (83317-5-RR, Clone: 240186C9) at dilution of 1:400 and CoraLite@488-Conjugated AffiniPure Goat Anti-Mouse IgG(H+L) (SA00013-1).



Biolayer interferometry (BLI) kinetic assays of 83317-5-RR against Human ADRB2 were performed. The affinity constant is 53.9 pM.