

# SAT1 Recombinant antibody

Catalog Number: 83319-1-RR

## Basic Information

**Catalog Number:**

83319-1-RR

**Size:**

1000 µg/ml

**Source:**

Rabbit

**Isotype:**

IgG

**Immunogen Catalog Number:**

AG1154

**GenBank Accession Number:**

BC008424

**GeneID (NCBI):**

6303

**UNIPROT ID:**

P21673

**Full Name:**

spermidine/spermine N1-acetyltransferase 1

**Calculated MW:**

20 kDa

**Observed MW:**

15-25 kDa

**Purification Method:**

Protein A purification

**CloneNo.:**

240157G2

**Recommended Dilutions:**

WB 1:1000-1:6000

IF 1:50-1:500

## Applications

**Tested Applications:**

WB, IF/ICC, ELISA

**Species Specificity:**

Human

**Positive Controls:**

WB : HEK-293 cells, K-562 cells, HeLa cells

IF : RAW 264.7 cells,

## Background Information

Spermidine/spermine N1-acetyltransferase 1 (SAT1 or SSAT1) is the key regulatory enzyme in the catabolism of polyamines, catalyzing acetylation of spermidine or spermine to generate N1-acetyl spermidine or N1-acetyl spermine, and N1, N12-diacetylspermine. The cellular level of SAT1 is normally extremely low, but it is induced rapidly by a variety of stimuli, including polyamines, polyamine analogs, toxic chemicals, certain drugs, and growth factors. Downregulation of SAT1 has been reported in Epstein-Barr virus positive Burkitt's lymphoma cells.

## Storage

**Storage:**

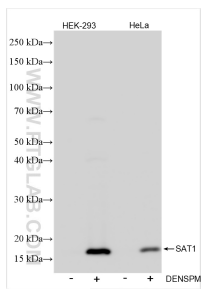
Store at -20°C. Stable for one year after shipment.

**Storage Buffer:**

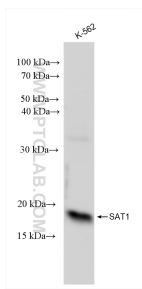
PBS with 0.02% sodium azide and 50% glycerol pH 7.3.

Aliquoting is unnecessary for -20°C storage

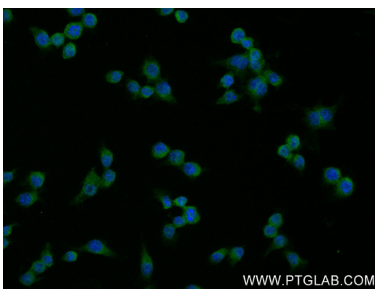
Selected Validation Data



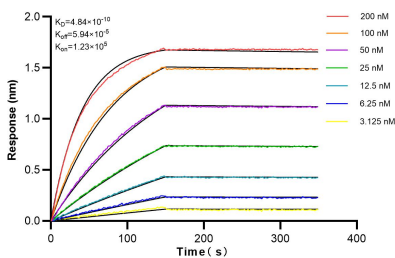
Untreated and DENS PM treated HEK-293 and HeLa cells were subjected to SDS PAGE followed by western blot with 83319-1-RR (SAT1 antibody) at dilution of 1:3000 incubated at room temperature for 1.5 hours.



Various lysates were subjected to SDS PAGE followed by western blot with 83319-1-RR (SAT1 antibody) at dilution of 1:10000 incubated at room temperature for 1.5 hours.



Immunofluorescent analysis of (4% PFA) fixed RAW 264.7 cells using SAT1 antibody (83319-1-RR, Clone: 240157G2 ) at dilution of 1:200 and CoraLite®488-Conjugated AffiniPure Goat Anti-Rabbit IgG(H+L) (SA00013-2).



Biolayer interferometry (BLI) kinetic assays of 83319-1-RR against Human SAT1 were performed. The affinity constant is 0.484 nM.