

For Research Use Only

# NRG1, isoform SMDF Recombinant antibody, PBS Only



Catalog Number:83323-6-PBS

## Basic Information

Catalog Number: 83323-6-PBS	GenBank Accession Number: BC007675	Purification Method: Protein A purification
Size: 1 mg/ml	GeneID (NCBI): 3084	CloneNo.: 240184G2
Source: Rabbit	UNIPROT ID: Q02297	
Isotype: IgG	Full Name: neuregulin 1	
Immunogen Catalog Number: AG0803	Calculated MW: 70 kDa	

## Applications

Tested Applications:  
IF, ELISA  
Species Specificity:  
Human

## Background Information

### Storage

Storage:  
Store at -80°C.  
Storage Buffer:  
PBS Only

For technical support and original validation data for this product please contact:

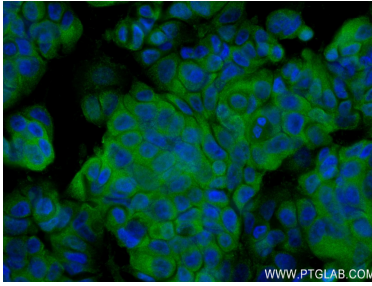
T: 4006900926

E: [Proteintech-CN@ptglab.com](mailto:Proteintech-CN@ptglab.com)

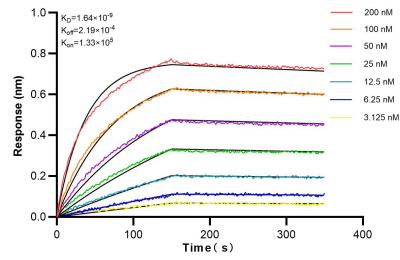
W: [ptgcn.com](http://ptgcn.com)

This product is exclusively available under Proteintech Group brand and is not available to purchase from any other manufacturer.

## Selected Validation Data



Immunofluorescent analysis of (4% PFA) fixed MCF-7 cells using NRG1, isoform SMDF antibody (83323-6-RR, Clone: 240184G2 ) at dilution of 1:100 and CoraLite@488-Conjugated AffiniPure Goat Anti-Mouse IgG(H+L) (SA00013-1). This data was developed using the same antibody clone with 83323-6-PBS in a different storage buffer formulation.



Bi-layer interferometry (BLI) kinetic assays of 83323-6-RR against Human NRG1, isoform SMDF were performed. The affinity constant is 1.64 nM.