

For Research Use Only

# NRG1, isoform SMDF Recombinant antibody



Catalog Number: 83323-6-RR

## Basic Information

<b>Catalog Number:</b> 83323-6-RR	<b>GenBank Accession Number:</b> BC007675	<b>Purification Method:</b> Protein A purification
<b>Size:</b> 300 µg/ml	<b>GeneID (NCBI):</b> 3084	<b>CloneNo.:</b> 240184G2
<b>Source:</b> Rabbit	<b>UNIPROT ID:</b> Q02297	<b>Recommended Dilutions:</b> IF 1:50-1:500
<b>Isotype:</b> IgG	<b>Full Name:</b> neuregulin 1	
<b>Immunogen Catalog Number:</b> AG0803	<b>Calculated MW:</b> 70 kDa	
	<b>Observed MW:</b> 70 kDa	

## Applications

<b>Tested Applications:</b> IF/ICC, ELISA	<b>Positive Controls:</b> IF : MCF-7 cells,
<b>Species Specificity:</b> Human	

## Background Information

Neuregulin 1 (NRG1) is a trophic factor that has been implicated in neural development, neurotransmission, and synaptic plasticity. NRG1 has multiple isoforms that are generated by usage of different promoters and alternative splicing of a single gene. NRG1 and its receptor ErbB tyrosine kinase are expressed not only in the developing nervous system, but also in the adult brain. The immunogen of this antibody is against NRG1 isoform SMDF.

## Storage

**Storage:**  
Store at -20°C. Stable for one year after shipment.  
**Storage Buffer:**  
PBS with 0.02% sodium azide and 50% glycerol pH 7.3.  
Aliquoting is unnecessary for -20°C storage

For technical support and original validation data for this product please contact:

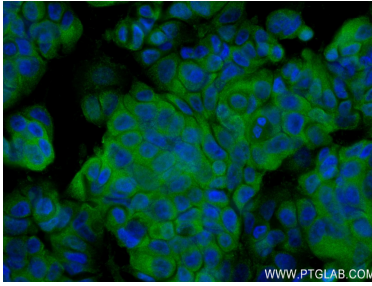
T: 4006900926

E: [Proteintech-CN@ptglab.com](mailto:Proteintech-CN@ptglab.com)

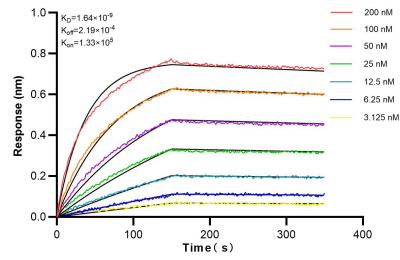
W: [ptgcn.com](http://ptgcn.com)

This product is exclusively available under Proteintech Group brand and is not available to purchase from any other manufacturer.

## Selected Validation Data



Immunofluorescent analysis of (4% PFA) fixed MCF-7 cells using NRG1, isoform SMDF antibody (83323-6-RR, Clone: 240184G2 ) at dilution of 1:100 and CoraLite@488-Conjugated AffiniPure Goat Anti-Mouse IgG(H+L) (SA00013-1).



Biolayer interferometry (BLI) kinetic assays of 83323-6-RR against Human NRG1, isoform SMDF were performed. The affinity constant is 1.64 nM.