

For Research Use Only

Bcl-xL Recombinant antibody, PBS Only (Capture)



Catalog Number: 83330-2-PBS

Basic Information

Catalog Number: 83330-2-PBS	GenBank Accession Number: BC019307	Purification Method: Protein A purification
Size: 1 mg/ml	GeneID (NCBI): 598	CloneNo.: 240450A9
Source: Rabbit	UNIPROT ID: Q07817	
Isotype: IgG	Full Name: BCL2-like 1	
Immunogen Catalog Number: AG25604	Calculated MW: 26 kDa	

Applications

Tested Applications:
IF, Indirect ELISA, Cytometric bead array

Species Specificity:
Human

Background Information

Storage

Storage:
Store at -80°C.
Storage Buffer:
PBS Only

For technical support and original validation data for this product please contact:

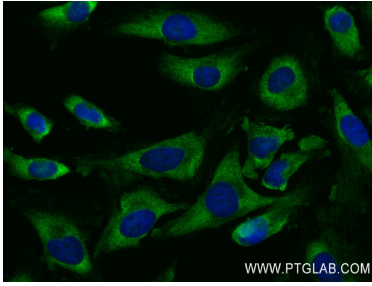
T: 4006900926

E: Proteintech-CN@ptglab.com

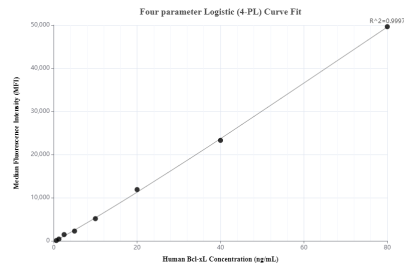
W: ptgcn.com

This product is exclusively available under Proteintech Group brand and is not available to purchase from any other manufacturer.

Selected Validation Data



Immunofluorescent analysis of (4% PFA) fixed HeLa cells using Bcl-xL antibody (83330-2-RR, Clone: 240450A9) at dilution of 1:250 and Multi-rAb CoraLite® Plus 488-Goat Anti-Rabbit Recombinant Secondary Antibody (H+L) (RGAR002). This data was developed using the same antibody clone with 83330-2-PBS in a different storage buffer formulation.



Cytometric bead array standard curve of MP00460-1, Bcl-xL Recombinant Matched Antibody Pair, PBS Only. Capture antibody: 83330-2-PBS. Detection antibody: 83330-3-PBS. Standard: Ag25604. Range: 0.625-80 ng/mL.