

For Research Use Only

Bcl-xL Recombinant antibody

Catalog Number: 83330-2-RR



Basic Information

| | | |
|---|--|---|
| Catalog Number: 83330-2-RR | GenBank Accession Number: BC019307 | Purification Method: Protein A purification |
| Size: 1000 µg/ml | GeneID (NCBI): 598 | CloneNo.: 240450A9 |
| Source: Rabbit | UNIPROT ID: Q07817 | Recommended Dilutions: IF 1:125-1:500 |
| Isotype: IgG | Full Name: BCL2-like 1 | |
| Immunogen Catalog Number: AG25604 | Calculated MW: 26 kDa | |

Applications

| | |
|--|---|
| Tested Applications: IF/ICC, ELISA, FC (Intra) | Positive Controls: IF : HeLa cells, |
| Species Specificity: Human | |

Background Information

BCL2L1 is a member of the BCL-2 protein family. BCL2L1 is expressed as three isoforms, Bcl-X(L), Bcl-X(s), and Bcl-X(beta), and is located at the outer mitochondrial membrane. The Bcl-X(L) isoform is a 233 amino acid protein, acting as an apoptotic inhibitor. Bcl-XL can form heterodimers with BAX, BAK or BCL2, and the heterodimerization with BAX does not seem to be required for anti-apoptotic activity. The Bcl-X(s) isoform is a shorter variant that is 178 amino acids in length and lacks a 63 amino acid region (amino acids 126-188), acting as an apoptotic activator. Bcl-X(beta) is a 227 amino acid protein.

Storage

Storage:
Store at -20°C. Stable for one year after shipment.
Storage Buffer:
PBS with 0.02% sodium azide and 50% glycerol pH 7.3.
Aliquoting is unnecessary for -20°C storage

For technical support and original validation data for this product please contact:

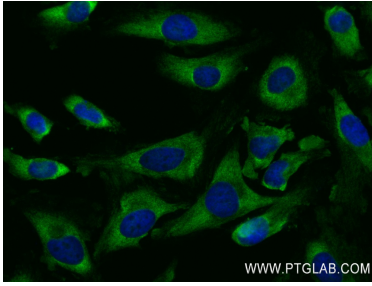
T: 4006900926

E: Proteintech-CN@ptglab.com

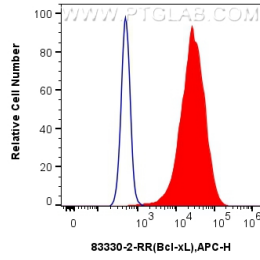
W: ptgcn.com

This product is exclusively available under Proteintech Group brand and is not available to purchase from any other manufacturer.

Selected Validation Data



Immunofluorescent analysis of (4% PFA) fixed HeLa cells using Bcl-xL antibody (83330-2-RR, Clone: 240450A9) at dilution of 1:250 and Multi-rAb CoraLite® Plus 488-Goat Anti-Rabbit Recombinant Secondary Antibody (H+L) (RGAR002).



1x10⁶ HeLa cells were intracellularly stained with 0.25 ug Bcl-xL Recombinant antibody (83330-2-RR, Clone:240450A9) and APC-Conjugated AffiniPure Goat Anti-Rabbit IgG(H+L)(red), or 0.25 ug Isotype Control (blue). Cells were fixed with 4% PFA and permeabilized with Flow Cytometry Perm Buffer (PF00011-C).