

For Research Use Only

# CRIP1 Recombinant antibody, PBS Only (Capture/Detector)

Catalog Number:83340-3-PBS



## Basic Information

<b>Catalog Number:</b> 83340-3-PBS	<b>GenBank Accession Number:</b> BC002738	<b>Purification Method:</b> Protein A purification
<b>Size:</b> 1000 µg/ml	<b>GeneID (NCBI):</b> 1396	<b>CloneNo.:</b> 240176G2
<b>Source:</b> Rabbit	<b>UNIPROT ID:</b> P50238	
<b>Isotype:</b> IgG	<b>Full Name:</b> cysteine-rich protein 1 (intestinal)	
<b>Immunogen Catalog Number:</b> AG7588	<b>Calculated MW:</b> 9 kDa	
	<b>Observed MW:</b> 8-9 kDa	

## Applications

**Tested Applications:**  
WB, IHC, Cytometric bead array, Sandwich ELISA,  
Indirect ELISA, Sample test

**Species Specificity:**  
human, mouse

## Background Information

CRIP1 also known as CRIP, CRP1, belongs to the LIM/double zinc finger protein family. CRIP1 has a unique double zinc finger motif, which is mainly expressed in the intestine, and may be involved in intestinal zinc transport (PMID: 31312368, 1946385). CRIP1 is overexpressed in immune cells of the epithelium and may play an important role in gut immunity (PMID: 27836662).

## Storage

**Storage:**  
Store at -80°C.  
**The product is shipped with ice packs. Upon receipt, store it immediately at -80°C**

**Storage Buffer:**  
PBS Only

For technical support and original validation data for this product please contact:

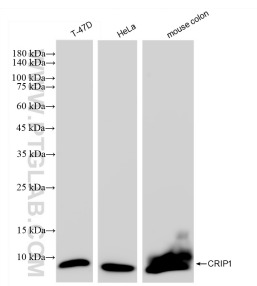
T: 4006900926

E: Proteintech-CN@ptglab.com

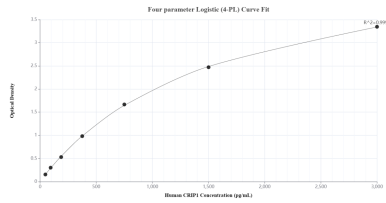
W: ptgcn.com

**This product is exclusively available under Proteintech Group brand and is not available to purchase from any other manufacturer.**

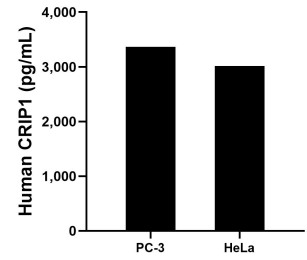
## Selected Validation Data



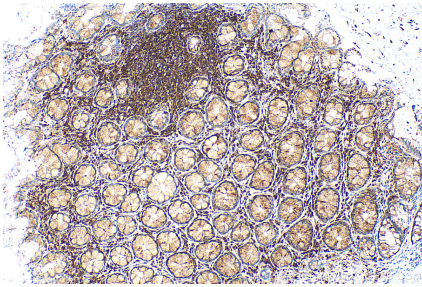
Various lysates were subjected to SDS PAGE followed by western blot with 83340-3-RR (CRIP1 antibody) at dilution of 1:10000 incubated at room temperature for 1.5 hours. This data was developed using the same antibody clone with 83340-3-PBS in a different storage buffer formulation.



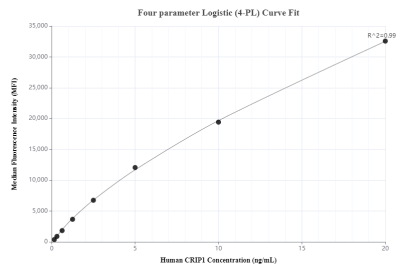
Sandwich ELISA standard curve of MP00382-3, Human CRIP1 Recombinant Matched Antibody Pair - PBS only. 83340-4-PBS was coated to a plate as the capture antibody and incubated with serial dilutions of standard Ag7588. 83340-3-PBS was HRP conjugated as the detection antibody. Range: 46.88-3000 pg/mL.



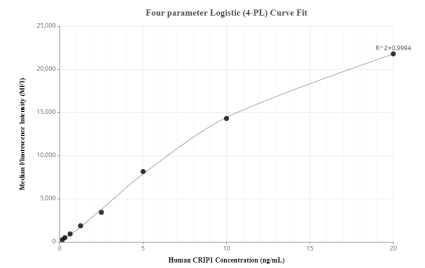
The mean CRIP1 concentration was determined to be 3,364.0 pg/mL in PC-3 cell extract based on a 3.0 mg/mL extract load and 3,015.0 pg/mL in HeLa cell extract based on a 3.0 mg/mL extract load.



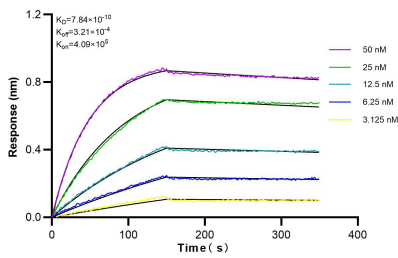
Immunohistochemical analysis of paraffin-embedded human colon tissue slide using 83340-3-RR (CRIP1 antibody) at dilution of 1:400 (under 10x lens). Heat mediated antigen retrieval with Tris-EDTA buffer (pH 9.0). This data was developed using the same antibody clone with 83340-3-PBS in a different storage buffer formulation.



Cytometric bead array standard curve of MP00382-1, CRIP1 Recombinant Matched Antibody Pair, PBS Only. Capture antibody: 83340-3-PBS. Detection antibody: 83340-2-PBS. Standard: Ag7588. Range: 0.156-20 ng/mL.



Cytometric bead array standard curve of MP00382-2, CRIP1 Recombinant Matched Antibody Pair, PBS Only. Capture antibody: 83340-1-PBS. Detection antibody: 83340-3-PBS. Standard: Ag7588. Range: 0.156-20 ng/mL.



Biolayer interferometry (BLI) kinetic assays of 83340-3-RR against Human CRIP1 were performed. The affinity constant is 0.784 nM.