

For Research Use Only

CRIP1 Recombinant antibody, PBS Only (Capture)

Catalog Number: 83340-4-PBS



Basic Information

Catalog Number: 83340-4-PBS	GenBank Accession Number: BC002738	Purification Method: Protein A purification
Size: 1 mg/ml	GeneID (NCBI): 1396	CloneNo.: 240176D8
Source: Rabbit	UNIPROT ID: P50238	
Isotype: IgG	Full Name: cysteine-rich protein 1 (intestinal)	
Immunogen Catalog Number: AG7588	Calculated MW: 9 kDa	

Applications

Tested Applications:
Sandwich ELISA, Indirect ELISA, Sample test

Species Specificity:
human

Background Information

Storage

Storage:
Store at -80°C.
The product is shipped with ice packs. Upon receipt, store it immediately at -80°C

Storage Buffer:
PBS Only

For technical support and original validation data for this product please contact:

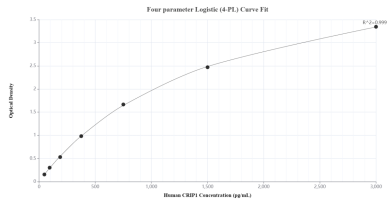
T: 4006900926

E: Proteintech-CN@ptglab.com

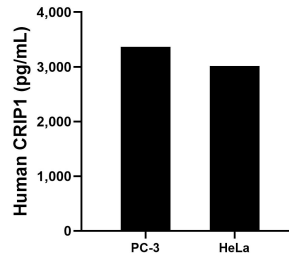
W: ptgcn.com

This product is exclusively available under Proteintech Group brand and is not available to purchase from any other manufacturer.

Selected Validation Data



Sandwich ELISA standard curve of MP00382-3, Human CRIP1 Recombinant Matched Antibody Pair - PBS only. 83340-4-PBS was coated to a plate as the capture antibody and incubated with serial dilutions of standard Ag7588. 83340-3-PBS was HRP conjugated as the detection antibody. Range: 46.88-3000 pg/mL



The mean CRIP1 concentration was determined to be 3,364.0 pg/mL in PC-3 cell extract based on a 3.0 mg/mL extract load and 3,015.0 pg/mL in HeLa cell extract based on a 3.0 mg/mL extract load.