

For Research Use Only

OPN, SPP1 Recombinant antibody, PBS Only (Detector)



Catalog Number: 83341-1-PBS

Basic Information

Catalog Number:

83341-1-PBS

Size:

1 mg/ml

Source:

Rabbit

Isotype:

IgG

GenBank Accession Number:

BC007016

GeneID (NCBI):

6696

UNIPROT ID:

P10451-5

Full Name:

secreted phosphoprotein 1

Calculated MW:

314 aa, 35 kDa

Purification Method:

Protein A purification

CloneNo.:

240206A2

Applications

Tested Applications:

WB, Indirect ELISA, Cytometric bead array

Species Specificity:

Human

Background Information

Storage

Storage:

Store at -80°C.

Storage Buffer:

PBS Only

For technical support and original validation data for this product please contact:

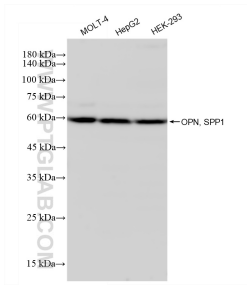
T: 4006900926

E: Proteintech-CN@ptglab.com

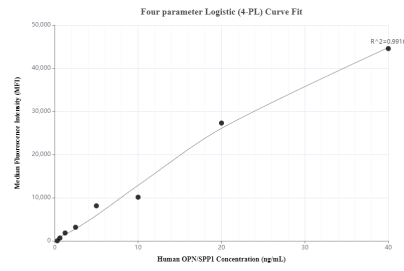
W: ptgcn.com

This product is exclusively available under Proteintech Group brand and is not available to purchase from any other manufacturer.

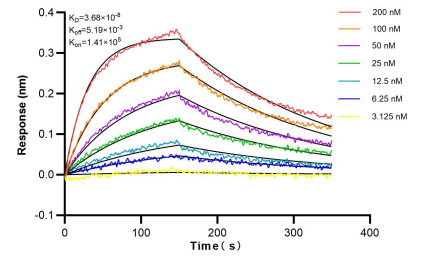
Selected Validation Data



Various lysates were subjected to SDS PAGE followed by western blot with 83341-1-RR (OPN, SPP1 antibody) at dilution of 1:3000 incubated at room temperature for 1.5 hours. This data was developed using the same antibody clone with 83341-1-PBS in a different storage buffer formulation.



Cytometric bead array standard curve of MP00375-1, OPN, SPP1 Recombinant Matched Antibody Pair, PBS Only. Capture antibody: 83341-2-PBS. Detection antibody: 83341-1-PBS. Standard: Eg0754. Range: 0.313-40 ng/mL.



Bi-layer interferometry (BLI) kinetic assays of 83341-1-RR against Human OPN/SPP1 were performed. The affinity constant is 36.8 nM.