

For Research Use Only

OPN, SPP1 Recombinant antibody, PBS Only (Capture)



Catalog Number: 83341-2-PBS

Basic Information

Catalog Number:

83341-2-PBS

Size:

1 mg/ml

Source:

Rabbit

Isotype:

IgG

GenBank Accession Number:

BC007016

GeneID (NCBI):

6696

UNIPROT ID:

P10451-5

Full Name:

secreted phosphoprotein 1

Calculated MW:

314 aa, 35 kDa

Purification Method:

Protein A purification

CloneNo.:

240206B7

Applications

Tested Applications:

IF, Indirect ELISA, Cytometric bead array

Species Specificity:

Human

Background Information

Storage

Storage:

Store at -80°C.

Storage Buffer:

PBS Only

For technical support and original validation data for this product please contact:

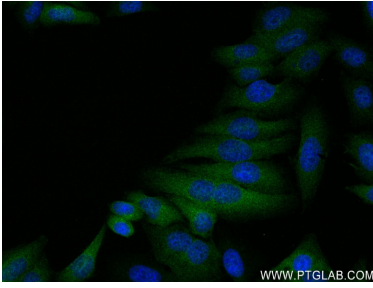
T: 4006900926

E: Proteintech-CN@ptglab.com

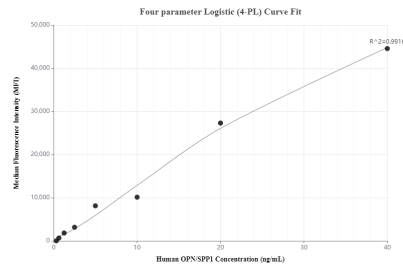
W: ptgcn.com

This product is exclusively available under Proteintech Group brand and is not available to purchase from any other manufacturer.

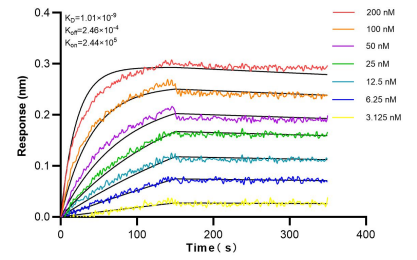
Selected Validation Data



Immunofluorescent analysis of (4% PFA) fixed HepG2 cells using OPN, SPP1 antibody (83341-2-RR, Clone: 240206B7) at dilution of 1:250 and CoraLite®488-Conjugated AffiniPure Goat Anti-Rabbit IgG(H+L) (SA00013-2). This data was developed using the same antibody clone with 83341-2-PBS in a different storage buffer formulation.



Cytometric bead array standard curve of MP00375-1, OPN, SPP1 Recombinant Matched Antibody Pair, PBS Only. Capture antibody: 83341-2-PBS. Detection antibody: 83341-1-PBS. Standard: Eg754. Range: 0.313-40 ng/mL.



Bi-layer interferometry (BLI) kinetic assays of 83341-2-RR against Human OPN/SPP1 were performed. The affinity constant is 1.01 nM.