

For Research Use Only

# OPN, SPP1 Recombinant antibody

Catalog Number: 83341-2-RR



## Basic Information

<b>Catalog Number:</b> 83341-2-RR	<b>GenBank Accession Number:</b> BC007016	<b>Purification Method:</b> Protein A purification
<b>Size:</b> 1000 µg/ml	<b>GeneID (NCBI):</b> 6696	<b>CloneNo.:</b> 240206B7
<b>Source:</b> Rabbit	<b>UNIPROT ID:</b> P10451-5	<b>Recommended Dilutions:</b> IF 1:125-1:500
<b>Isotype:</b> IgG	<b>Full Name:</b> secreted phosphoprotein 1	
	<b>Calculated MW:</b> 314 aa, 35 kDa	

## Applications

<b>Tested Applications:</b> IF/ICC, ELISA	<b>Positive Controls:</b> IF : HepG2 cells,
<b>Species Specificity:</b> Human	

## Background Information

Osteopontin (OPN), also known as SPP1, is a secreted glycoprophosphoprotein that belongs to the small integrin-binding ligand N-linked glycoprotein (SIBLING) family. Originally isolated from bone, OPN has been found in kidneys, vascular tissues, biological fluids, and various tumor tissues (PMID: 15138464; 16406521). OPN can interact with CD44 and integrins and regulate diverse biological processes. It has a multifaceted role in bone development and remodeling, and is also involved in the inflammatory and immune response, oncogenesis and cancer progression. The very acidic nature of OPN, as well as the presence of variable posttranslational modifications, has led to anomalous migration in SDS-polyacrylamide gels and therefore to reports of different molecular weights for OPN (PMID: 8293561). Depending on the cell and tissue source and/or the SDS-PAGE system, OPN migrates with a molecular weight of 44-80 kDa, as well as at some smaller bands corresponding to peptide fragments (PMID: 8195113; 17890765).

## Storage

**Storage:**  
Store at -20°C. Stable for one year after shipment.  
**Storage Buffer:**  
PBS with 0.02% sodium azide and 50% glycerol pH 7.3.  
Aliquoting is unnecessary for -20°C storage

For technical support and original validation data for this product please contact:

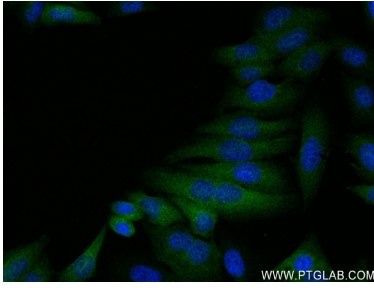
T: 4006900926

E: Proteintech-CN@ptglab.com

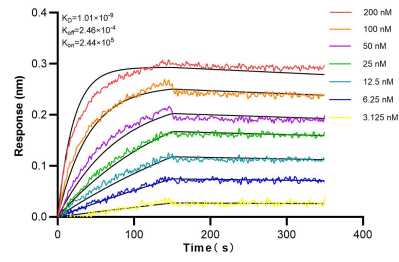
W: ptgcn.com

This product is exclusively available under Proteintech Group brand and is not available to purchase from any other manufacturer.

## Selected Validation Data



Immunofluorescent analysis of (4% PFA) fixed HepG2 cells using OPN, SPP1 antibody (83341-2-RR, Clone: 240206B7) at dilution of 1:250 and CoraLite@488-Conjugated AffiniPure Goat Anti-Rabbit IgG(H+L) (SA00013-2).



Biolayer interferometry (BLI) kinetic assays of 83341-2-RR against Human OPN/SPP1 were performed. The affinity constant is 1.01 nM.