

For Research Use Only

SLC38A7 Recombinant antibody, PBS Only (Capture)



Catalog Number: 83346-1-PBS

Basic Information

| | | |
|--------------------------------------|--|--|
| Catalog Number: 83346-1-PBS | GenBank Accession Number: BC001961 | Purification Method: Protein A purification |
| Size: 1 mg/ml | GeneID (NCBI): 55238 | CloneNo.: 240147A2 |
| Source: Rabbit | UNIPROT ID: Q9NVC3 | |
| Isotype: IgG | Full Name: solute carrier family 38, member 7 | |
| Immunogen Catalog Number: AG35081 | Calculated MW: 50 kDa | |

Applications

Tested Applications:
Indirect ELISA, Cytometric bead array

Species Specificity:
Human

Background Information

Storage

Storage:
Store at -80°C.
The product is shipped with ice packs. Upon receipt, store it immediately at -80°C

Storage Buffer:
PBS Only

For technical support and original validation data for this product please contact:

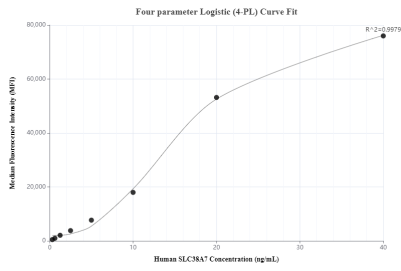
T: 4006900926

E: Proteintech-CN@ptglab.com

W: ptgcn.com

This product is exclusively available under Proteintech Group brand and is not available to purchase from any other manufacturer.

Selected Validation Data



Cytometric bead array standard curve of MP00351-1, SLC38A7 Recombinant Matched Antibody Pair, PBS Only. Capture antibody: 83346-1-PBS. Detection antibody: 83346-2-PBS. Standard: Ag35081. Range: 0.313-40 ng/mL.