

For Research Use Only

# FGR Recombinant antibody, PBS Only (Capture)

Catalog Number: 83352-1-PBS



## Basic Information

<b>Catalog Number:</b> 83352-1-PBS	<b>GenBank Accession Number:</b> NM_005248	<b>Purification Method:</b> Protein A purification
<b>Size:</b> 1 mg/ml	<b>GeneID (NCBI):</b> 2268	<b>CloneNo.:</b> 240275E5
<b>Source:</b> Rabbit	<b>UNIPROT ID:</b> P09769	
<b>Isotype:</b> IgG	<b>Full Name:</b> Gardner-Rasheed feline sarcoma viral (v-fgr) oncogene homolog	
<b>Immunogen Catalog Number:</b> AG34944	<b>Calculated MW:</b> 59 kDa	
	<b>Observed MW:</b> 60 kDa	

## Applications

**Tested Applications:**  
WB, IF/ICC, Cytometric bead array, Sandwich ELISA,  
Indirect ELISA, Sample test

**Species Specificity:**  
human

## Background Information

FGR (Tyrosine-protein kinase Fgr) is a member of the Src family of protein tyrosine kinases (PTKs). It contains N-terminal sites for myristylation and palmitoylation, a PTK domain, and SH2 and SH3 domains which are involved in mediating protein-protein interactions with phosphotyrosine-containing and proline-rich motifs, respectively.

## Storage

**Storage:**  
Store at -80°C.  
**The product is shipped with ice packs. Upon receipt, store it immediately at -80°C**

**Storage Buffer:**  
PBS Only

For technical support and original validation data for this product please contact:

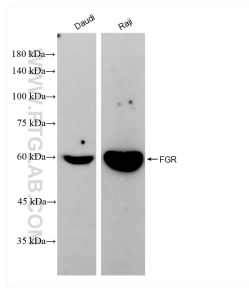
T: 4006900926

E: [Proteintech-CN@ptglab.com](mailto:Proteintech-CN@ptglab.com)

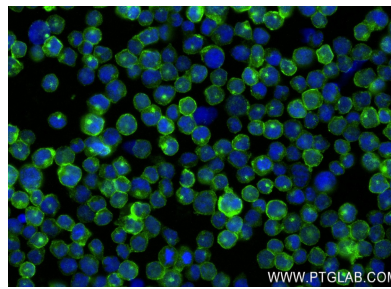
W: [ptgcn.com](http://ptgcn.com)

**This product is exclusively available under Proteintech Group brand and is not available to purchase from any other manufacturer.**

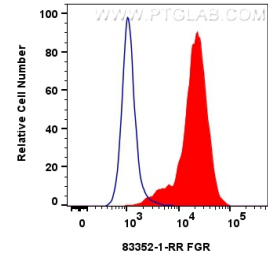
## Selected Validation Data



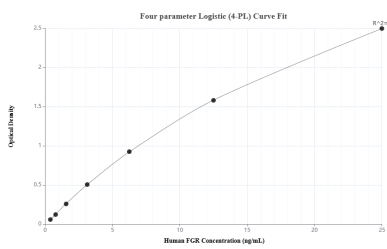
Various lysates were subjected to SDS PAGE followed by western blot with 83352-1-RR (FGR antibody) at dilution of 1:10000 incubated at room temperature for 1.5 hours. This data was developed using the same antibody clone with 83352-1-PBS in a different storage buffer formulation.



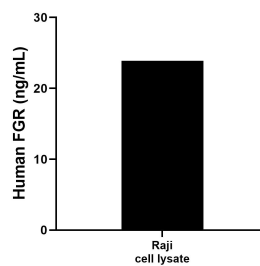
Immunofluorescent analysis of (4% PFA) fixed Raji cells using FGR antibody (83352-1-RR, Clone: 240275E5) at dilution of 1:250 and CoraLite®488-Conjugated AffiniPure Goat Anti-Rabbit IgG(H+L) (SA00013-2). This data was developed using the same antibody clone with 83352-1-PBS in a different storage buffer formulation.



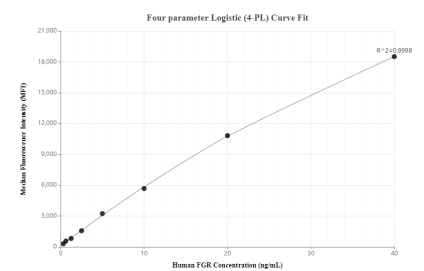
$1 \times 10^6$  Raji cells were intracellularly stained with 0.25 ug FGR Recombinant antibody (83352-1-RR, Clone:240275E5) and CoraLite®488-Conjugated Goat Anti-Rabbit IgG(H+L) (SA00013-2)(red), or 0.25 ug Rabbit IgG Isotype Control Recombinant Antibody (98136-1-RR, Clone: 240953C9) (blue). Cells were fixed with 4% PFA and permeabilized with Flow Cytometry Perm Buffer (PF00011-C). This data was developed using the same antibody clone with 83352-1-PBS in a



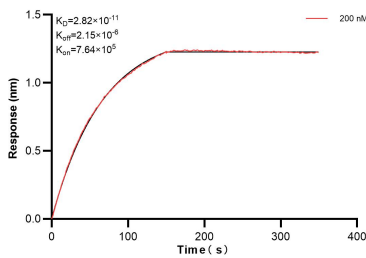
Sandwich ELISA standard curve of MP00370-1, Human FGR Recombinant Matched Antibody Pair - PBS only. 83352-1-PBS was coated to a plate as the capture antibody and incubated with serial dilutions of standard Ag34944. 83352-3-PBS was HRP conjugated as the detection antibody. Range: 0.0781-25 ng/mL



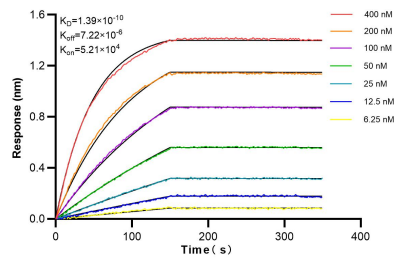
Raji cell lysate was measured. The human FGR concentration of detected samples was determined to be 23.90 ng/mL (based on a 1.2 mg/mL extract load).



Cytometric bead array standard curve of MP00370-1, FGR Recombinant Matched Antibody Pair, PBS Only. Capture antibody: 83352-1-PBS. Detection antibody: 83352-3-PBS. Standard: Ag34944. Range: 0.313-40 ng/mL



Biolayer interferometry (BLI) kinetic assay of 83352-1-PBS against Human FGR was performed. The affinity constant is 28.2 pM.



Biolayer interferometry (BLI) kinetic assays of 83352-1-RR against Human FGR were performed. The affinity constant is 0.139 nM.