

For Research Use Only

# SLC22A8 Recombinant antibody, PBS Only (Detector)



Catalog Number: 83357-2-PBS

## Basic Information

<b>Catalog Number:</b> 83357-2-PBS	<b>GenBank Accession Number:</b> bc022387	<b>Purification Method:</b> Protein A purification
<b>Size:</b> 1 mg/ml	<b>GeneID (NCBI):</b> 9376	<b>CloneNo.:</b> 240138G10
<b>Source:</b> Rabbit	<b>UNIPROT ID:</b> Q8TCC7	
<b>Isotype:</b> IgG	<b>Full Name:</b> solute carrier family 22 (organic anion transporter), member 8	
<b>Immunogen Catalog Number:</b> AG9527	<b>Calculated MW:</b> 542 aa, 60 kDa	

## Applications

**Tested Applications:**  
Indirect ELISA, Cytometric bead array

**Species Specificity:**  
Human

## Background Information

### Storage

**Storage:**  
Store at -80°C.  
**The product is shipped with ice packs. Upon receipt, store it immediately at -80°C**

**Storage Buffer:**  
PBS Only

For technical support and original validation data for this product please contact:

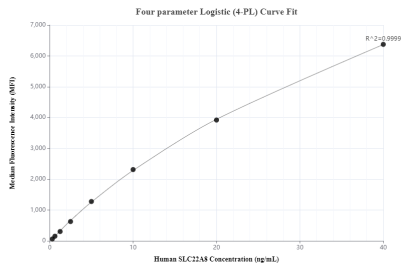
T: 4006900926

E: [Proteintech-CN@ptglab.com](mailto:Proteintech-CN@ptglab.com)

W: [ptgcn.com](http://ptgcn.com)

**This product is exclusively available under Proteintech Group brand and is not available to purchase from any other manufacturer.**

## Selected Validation Data



Cytometric bead array standard curve of MP00363-3, SLC22A8 Recombinant Matched Antibody Pair, PBS Only. Capture antibody: 83357-1-PBS. Detection antibody: 83357-2-PBS. Standard: Ag9527. Range: 0.313-40ng/mL.