

For Research Use Only

SLC25A46 Recombinant antibody, PBS Only (Capture)



Catalog Number: 83360-2-PBS

Basic Information

Catalog Number: 83360-2-PBS	GenBank Accession Number: BC017169	Purification Method: Protein A purification
Size: 1 mg/ml	GeneID (NCBI): 91137	CloneNo.: 240114G3
Source: Rabbit	UNIPROT ID: Q96AG3	
Isotype: IgG	Full Name: solute carrier family 25, member 46	
Immunogen Catalog Number: AG27293	Calculated MW: 418 aa, 46 kDa	

Applications

Tested Applications:
WB, Indirect ELISA, Cytometric bead array

Species Specificity:
Human

Background Information

Storage

Storage:
Store at -80°C.

Storage Buffer:
PBS Only

For technical support and original validation data for this product please contact:

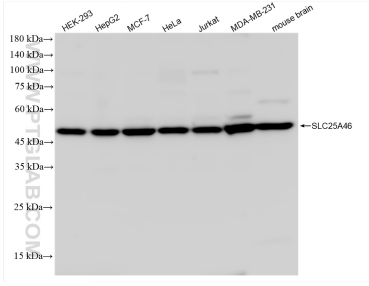
T: 4006900926

E: Proteintech-CN@ptglab.com

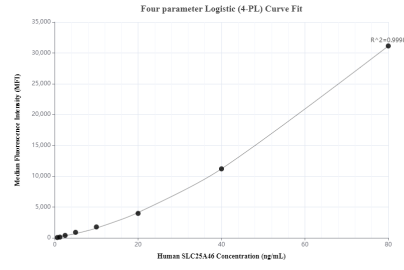
W: ptgcn.com

This product is exclusively available under Proteintech Group brand and is not available to purchase from any other manufacturer.

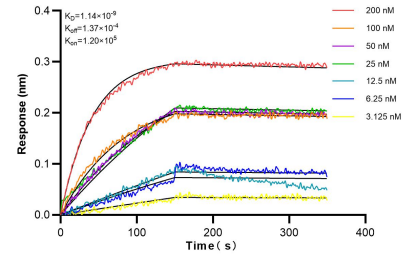
Selected Validation Data



Various lysates were subjected to SDS PAGE followed by western blot with 83360-2-RR (SLC25A46 antibody) at dilution of 1:10000 incubated at room temperature for 1.5 hours. This data was developed using the same antibody clone with 83360-2-PBS in a different storage buffer formulation.



Cytometric bead array standard curve of MP00369-1, SLC25A46 Recombinant Matched Antibody Pair, PBS Only. Capture antibody: 83360-2-PBS. Detection antibody: 83360-3-PBS. Standard: Ag27293. Range: 0.625-80ng/mL.



Bi-layer interferometry (BLI) kinetic assays of 83360-2-RR against Human SLC25A46 were performed. The affinity constant is 1.14 nM.