

For Research Use Only

SLC25A46 Recombinant antibody

Catalog Number: 83360-2-RR



Basic Information

Catalog Number: 83360-2-RR	GenBank Accession Number: BC017169	Purification Method: Protein A purification
Size: 1000 µg/ml	GeneID (NCBI): 91137	CloneNo.: 240114G3
Source: Rabbit	UNIPROT ID: Q96AG3	Recommended Dilutions: WB 1:5000-1:50000
Isotype: IgG	Full Name: solute carrier family 25, member 46	
Immunogen Catalog Number: AG27293	Calculated MW: 418 aa, 46 kDa	
	Observed MW: 46 kDa	

Applications

Tested Applications: WB, ELISA	Positive Controls: WB : HEK-293 cells, HepG2 cells, MCF-7 cells, HeLa cells, Jurkat cells, MDA-MB-231 cells, mouse brain tissue
Species Specificity: Human, Mouse	

Background Information

Solute carrier family 25 member 46 (SLC25A46), a highly conserved protein among various species including vertebrates, is a nuclear gene encoding mitochondrial carriers. SLC25A46 is involved in mitochondrial fission and the transport of lipids from the endoplasmic reticulum to mitochondria (PMID: 33277645). SLC25A46 has 3 isoforms with molecular weights of 30, 37 and 46 kDa, respectively.

Storage

Storage:
Store at -20°C. Stable for one year after shipment.
Storage Buffer:
PBS with 0.02% sodium azide and 50% glycerol pH 7.3.
Aliquoting is unnecessary for -20°C storage

For technical support and original validation data for this product please contact:

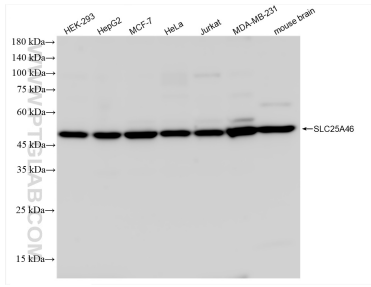
T: 4006900926

E: Proteintech-CN@ptglab.com

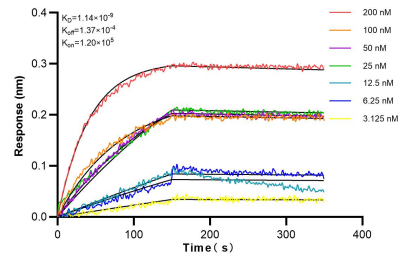
W: ptgcn.com

This product is exclusively available under Proteintech Group brand and is not available to purchase from any other manufacturer.

Selected Validation Data



Various lysates were subjected to SDS PAGE followed by western blot with 83360-2-RR (SLC25A46 antibody) at dilution of 1:10000 incubated at room temperature for 1.5 hours.



Biolayer interferometry (BLI) kinetic assays of 83360-2-RR against Human SLC25A46 were performed. The affinity constant is 1.14 nM.