

For Research Use Only

NCAM1/CD56 Recombinant antibody, PBS Only



Catalog Number: 83365-6-PBS

Basic Information

Catalog Number: 83365-6-PBS	GenBank Accession Number: BC047244	Purification Method: Protein A purification
Size: 1 mg/ml	GeneID (NCBI): 4684	CloneNo.: 240078C9
Source: Rabbit	ENSEMBL Gene ID: ENSG00000149294	
Isotype: IgG	UNIPROT ID: P13591	
	Full Name: neural cell adhesion molecule 1	
	Calculated MW: 95 kDa	

Applications

Tested Applications:
WB, IF, ELISA

Species Specificity:
Human

Background Information

Neural cell adhesion molecule 1 (NCAM1, also known as CD56) is a cell adhesion glycoprotein of the immunoglobulin (Ig) superfamily. It is a multifunction protein involved in synaptic plasticity, neurodevelopment, and neurogenesis. NCAM1 is expressed on human neurons, glial cells, skeletal muscle cells, NK cells and a subset of T cells, and the expression is observed in a wide variety of human tumors, including myeloma, myeloid leukemia, neuroendocrine tumors, Wilms' tumor, neuroblastoma, and NK/T cell lymphomas. Three major isoforms of NCAM1, with molecular masses of 120, 140, and 180 kDa, are generated by alternative splicing of mRNA (PMID: 9696812). The glycosylphosphatidylinositol (GPI)-anchored NCAM120 and the transmembrane NCAM140 and NCAM180 consist of five Ig-like domains and two fibronectin-type III repeats (FNIII). All three forms can be posttranslationally modified by addition of polysialic acid (PSA) (PMID: 14976519). Several other isoforms have also been described (PMID: 1856291).

Storage

Storage:
Store at -80°C.

Storage Buffer:
PBS Only

For technical support and original validation data for this product please contact:

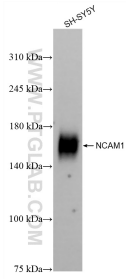
T: 4006900926

E: Proteintech-CN@ptglab.com

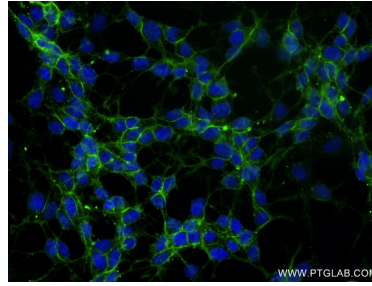
W: ptgcn.com

This product is exclusively available under Proteintech Group brand and is not available to purchase from any other manufacturer.

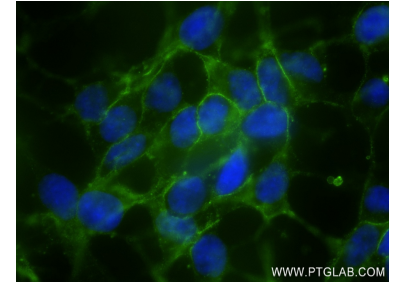
Selected Validation Data



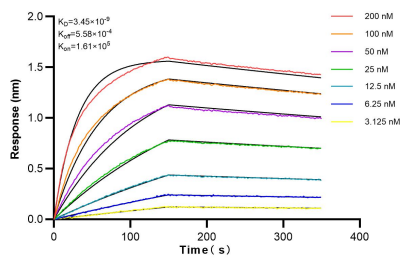
SH-SY5Y cells were subjected to SDS PAGE followed by western blot with 83365-6-RR (NCAM1/CD56 antibody) at dilution of 1:1000 incubated at room temperature for 1.5 hours. This data was developed using the same antibody clone with 83365-6-PBS in a different storage buffer formulation.



Immunofluorescent analysis of (4% PFA) fixed SH-SY5Y cells using NCAM1/CD56 antibody (83365-6-RR, Clone: 240078C9) at dilution of 1:200 and CoraLite®488-Conjugated AffiniPure Goat Anti-Rabbit IgG(H+L) (SA00013-2). This data was developed using the same antibody clone with 83365-6-PBS in a different storage buffer formulation.



Immunofluorescent analysis of (4% PFA) fixed SH-SY5Y cells using NCAM1/CD56 antibody (83365-6-RR, Clone: 240078C9) at dilution of 1:200 and CoraLite®488-Conjugated AffiniPure Goat Anti-Rabbit IgG(H+L) (SA00013-2). This data was developed using the same antibody clone with 83365-6-PBS in a different storage buffer formulation.



Biolayer interferometry (BLI) kinetic assays of 83365-6-RR against Human NCAM1/CD56 were performed. The affinity constant is 3.45 nM.