

For Research Use Only

Rat MCP-1 Recombinant antibody, PBS Only (Detector)



Catalog Number: 83370-2-PBS

Basic Information

Catalog Number:

83370-2-PBS

Size:

1 mg/ml

Source:

Rabbit

Isotype:

IgG

GenBank Accession Number:

NM_031530

GeneID (NCBI):

24770

UNIPROT ID:

P14844

Full Name:

chemokine (C-C motif) ligand 2

Calculated MW:

16 kDa

Purification Method:

Protein A purification

CloneNo.:

240341G3

Applications

Tested Applications:

WB, Indirect ELISA, Cytometric bead array

Species Specificity:

Rat

Background Information

Storage

Storage:

Store at -80°C.

Storage Buffer:

PBS Only

For technical support and original validation data for this product please contact:

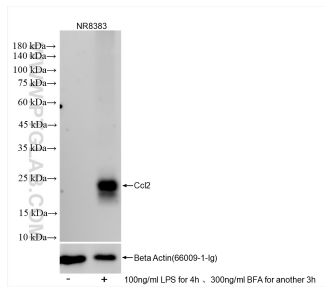
T: 4006900926

E: Proteintech-CN@ptglab.com

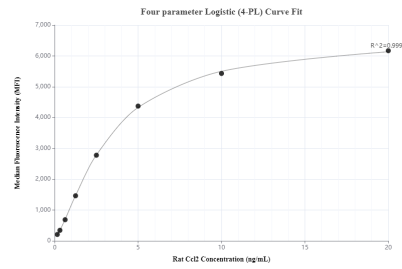
W: ptgcn.com

This product is exclusively available under Proteintech Group brand and is not available to purchase from any other manufacturer.

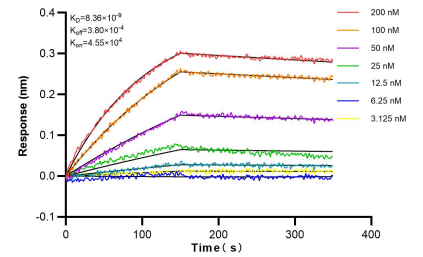
Selected Validation Data



Untreated, LPS and Brefeldin A treated NR8383 cells were subjected to SDS PAGE followed by western blot with 83370-2-RR (Ccl2 antibody) at dilution of 1:10000 incubated at room temperature for 1.5 hours. This data was developed using the same antibody clone with 83370-2-PBS in a different storage buffer formulation.



Cytometric bead array standard curve of MP00390-2, RAT MCP-1/CCL-2 Recombinant Matched Antibody Pair, PBS Only. Capture antibody: 83370-3-PBS. Detection antibody: 83370-2-PBS. Standard: Eg0397. Range: 0.156-20 ng/mL.



Bi-layer interferometry (BLI) kinetic assays of 83370-2-RR against Rat MCP-1 were performed. The affinity constant is 0.836 nM.