

For Research Use Only

# MCP-1 Recombinant antibody

Catalog Number: 83370-2-RR



## Basic Information

<b>Catalog Number:</b> 83370-2-RR	<b>GenBank Accession Number:</b> NML_031530	<b>Purification Method:</b> Protein A purification
<b>Size:</b> 1000 µg/ml	<b>GeneID (NCBI):</b> 24770	<b>CloneNo.:</b> 240341G3
<b>Source:</b> Rabbit	<b>UNIPROT ID:</b> P14844	<b>Recommended Dilutions:</b> WB 1:5000-1:50000
<b>Isotype:</b> IgG	<b>Full Name:</b> chemokine (C-C motif) ligand 2	
	<b>Calculated MW:</b> 16 kDa	
	<b>Observed MW:</b> 20 kDa	

## Applications

<b>Tested Applications:</b> WB, ELISA	<b>Positive Controls:</b> WB : LPS and Brefeldin A treated NR8383 cells,
<b>Species Specificity:</b> rat	

## Background Information

Monocyte chemoattractant protein-1 (MCP-1/CCL2) is one of the key chemokines that regulate migration and infiltration of monocytes/macrophages. Both CCL2 and its receptor CCR2 have been demonstrated to be induced and involved in various diseases. Migration of monocytes from the blood stream across the vascular endothelium is required for routine immunological surveillance of tissues, as well as in response to inflammation.

## Storage

**Storage:**  
Store at -20°C. Stable for one year after shipment.  
**Storage Buffer:**  
PBS with 0.02% sodium azide and 50% glycerol pH 7.3.  
Aliquoting is unnecessary for -20°C storage

For technical support and original validation data for this product please contact:

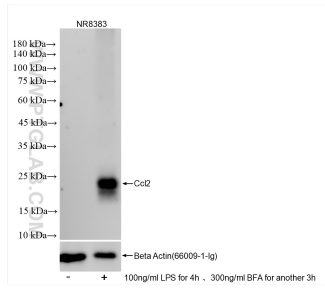
T: 4006900926

E: [Proteintech-CN@ptglab.com](mailto:Proteintech-CN@ptglab.com)

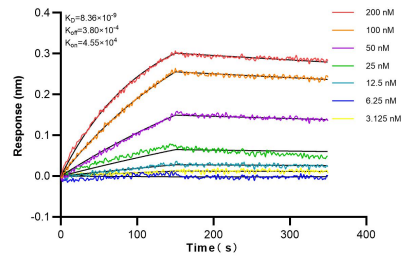
W: [ptgcn.com](http://ptgcn.com)

**This product is exclusively available under Proteintech Group brand and is not available to purchase from any other manufacturer.**

## Selected Validation Data



Untreated, LPS and Brefeldin A treated NR8383 cells were subjected to SDS PAGE followed by western blot with 83370-2-RR (Ccl2 antibody) at dilution of 1:10000 incubated at room temperature for 1.5 hours.



Biolayer interferometry (BLI) kinetic assays of 83370-2-RR against Rat MCP-1 were performed. The affinity constant is 0.836 nM.