

For Research Use Only

Rat MCP-1/CCL2 Recombinant antibody, PBS Only (Capture)

Catalog Number:83370-4-PBS



Basic Information

Catalog Number:

83370-4-PBS

Size:

1 mg/ml

Source:

Rabbit

Isotype:

IgG

GenBank Accession Number:

NM_031530

GeneID (NCBI):

24770

UNIPROT ID:

P14844

Full Name:

chemokine (C-C motif) ligand 2

Calculated MW:

16 kDa

Purification Method:

Protein A purification

CloneNo.:

240341C1

Applications

Tested Applications:

Sandwich ELISA, Indirect ELISA, Sample test

Species Specificity:

rat

Background Information

Storage

Storage:

Store at -80°C.

The product is shipped with ice packs. Upon receipt, store it immediately at -80°C

Storage Buffer:

PBS Only

For technical support and original validation data for this product please contact:

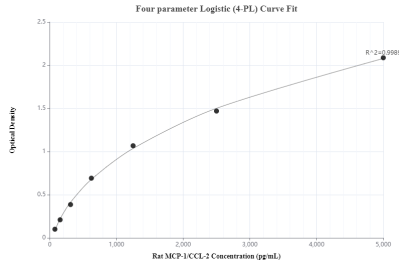
T: 4006900926

E: Proteintech-CN@ptglab.com

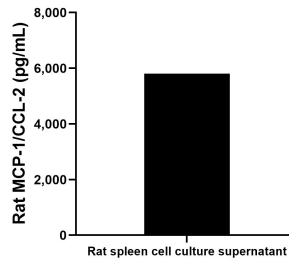
W: ptgcn.com

This product is exclusively available under Proteintech Group brand and is not available to purchase from any other manufacturer.

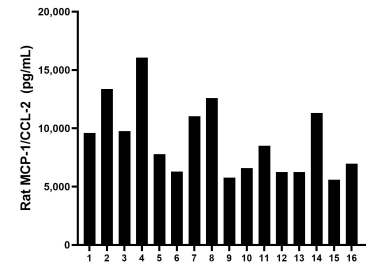
Selected Validation Data



Sandwich ELISA standard curve of MP00390-3, rat MCP-1/CCL-2 Recombinant Matched Antibody Pair - PBS only. 83370-4-PBS was coated to a plate as the capture antibody and incubated with serial dilutions of standard: Eg0397. 83370-2-PBS was HRP conjugated as the detection antibody. Range: 78.1-5000 pg/mL.



Rat spleen cell cultures (1/2 spleen; 1-2 mm pieces in 50 mL DMEM supplemented with 10% fetal bovine serum, containing 100 ng/mL LPS) were collected after culturing for 3 days in a CO₂-enriched (9.5%) incubator. The cell culture supernatant was assayed for rat MCP-1/CCL2 and measured 5,804.62 pg/mL.



Serum of sixteen rat donors was measured. The MCP-1/CCL-2 concentration of detected samples was determined to be 8,981.3 pg/mL with a range of 5,770.2 - 16,068.9 pg/mL.