

For Research Use Only

# SYCP1 Recombinant antibody, PBS Only



Catalog Number: 83382-1-PBS

## Basic Information

Catalog Number: 83382-1-PBS	GenBank Accession Number: BC126266	Purification Method: Protein A purification
Size: 1 mg/ml	GeneID (NCBI): 6847	CloneNo.: 240033E3
Source: Rabbit	UNIPROT ID: Q15431	
Isotype: IgG	Full Name: synaptonemal complex protein 1	
Immunogen Catalog Number: AG16005	Calculated MW: 976 aa, 114 kDa	

## Applications

Tested Applications:  
WB, Indirect ELISA

Species Specificity:  
Human

## Background Information

### Storage

Storage:  
Store at -80°C.  
**The product is shipped with ice packs. Upon receipt, store it immediately at -80°C**

Storage Buffer:  
PBS Only

For technical support and original validation data for this product please contact:

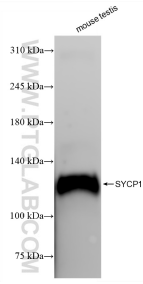
T: 4006900926

E: [Proteintech-CN@ptglab.com](mailto:Proteintech-CN@ptglab.com)

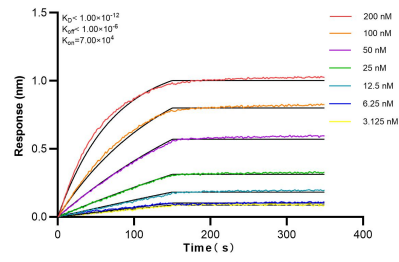
W: [ptgcn.com](http://ptgcn.com)

**This product is exclusively available under Proteintech Group brand and is not available to purchase from any other manufacturer.**

## Selected Validation Data



mouse testis tissue were subjected to SDS PAGE followed by western blot with 83382-1-RR (SYCP1 antibody) at dilution of 1:2000 incubated at room temperature for 1.5 hours. This data was developed using the same antibody clone with 83382-1-PBS in a different storage buffer formulation.



Biolayer interferometry (BLI) kinetic assays of 83382-1-RR against Human SYCP1 were performed. The affinity constant is below 1 pM.