

For Research Use Only

SYCP1 Recombinant antibody

Catalog Number: 83382-1-RR



Basic Information

Catalog Number: 83382-1-RR	GenBank Accession Number: BC126266	Purification Method: Protein A purification
Size: 1000 µg/ml	GeneID (NCBI): 6847	CloneNo.: 240033E3
Source: Rabbit	UNIPROT ID: Q15431	Recommended Dilutions: WB 1:1000-1:4000
Isotype: IgG	Full Name: synaptonemal complex protein 1	
Immunogen Catalog Number: AG16005	Calculated MW: 976 aa, 114 kDa	
	Observed MW: 115-120 kDa	

Applications

Tested Applications: WB, FC (Intra), ELISA	Positive Controls: WB : mouse testis tissue,
Species Specificity: human, mouse	

Background Information

Storage

Storage:
Store at -20°C. Stable for one year after shipment.
Storage Buffer:
PBS with 0.02% sodium azide and 50% glycerol pH 7.3.
Aliquoting is unnecessary for -20°C storage

For technical support and original validation data for this product please contact:

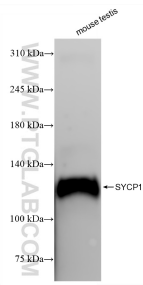
T: 4006900926

E: Proteintech-CN@ptglab.com

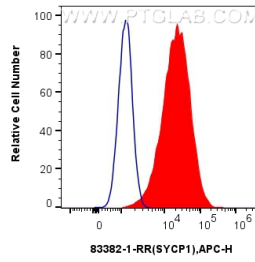
W: ptgcn.com

This product is exclusively available under Proteintech Group brand and is not available to purchase from any other manufacturer.

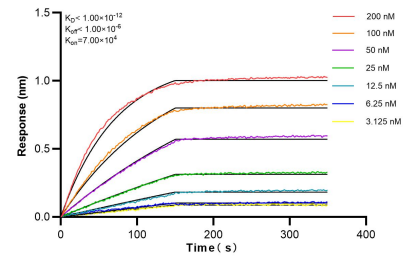
Selected Validation Data



mouse testis tissue were subjected to SDS PAGE followed by western blot with 83382-1-RR (SYCP1 antibody) at dilution of 1:2000 incubated at room temperature for 1.5 hours.



1×10^6 MCF-7 cells were intracellularly stained with 0.25 μ g Sycp1 Recombinant Antibody (83382-1-RR, Clone:240033E3) and APC-Conjugated AffiniPure Goat Anti-Rabbit IgG(H+L)(red), or 0.25 μ g Isotype Control (blue). Cells were fixed and permeabilized with Transcription Factor Staining Buffer Kit (PF00011).



Biacore interferometry (BLI) kinetic assays of 83382-1-RR against Human SYCP1 were performed. The affinity constant is below 1 pM.