

For Research Use Only

# BRCA1 Recombinant antibody, PBS Only (Capture/Detector)

Catalog Number:83390-2-PBS



## Basic Information

<b>Catalog Number:</b> 83390-2-PBS	<b>GenBank Accession Number:</b> BC115037	<b>Purification Method:</b> Protein A purification
<b>Size:</b> 1 mg/ml	<b>GeneID (NCBI):</b> 672	<b>CloneNo.:</b> 240285H6
<b>Source:</b> Rabbit	<b>UNIPROT ID:</b> P38398	
<b>Isotype:</b> IgG	<b>Full Name:</b> breast cancer 1, early onset	
<b>Immunogen Catalog Number:</b> AG17946	<b>Calculated MW:</b> 1863 aa, 208 kDa	

## Applications

**Tested Applications:**  
Indirect ELISA, Cytometric bead array

**Species Specificity:**  
human

## Background Information

### Storage

**Storage:**  
Store at -80°C.  
**The product is shipped with ice packs. Upon receipt, store it immediately at -80°C**

**Storage Buffer:**  
PBS Only

For technical support and original validation data for this product please contact:

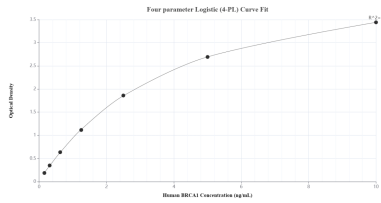
T: 4006900926

E: [Proteintech-CN@ptglab.com](mailto:Proteintech-CN@ptglab.com)

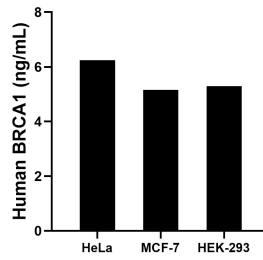
W: [ptgcn.com](http://ptgcn.com)

**This product is exclusively available under Proteintech Group brand and is not available to purchase from any other manufacturer.**

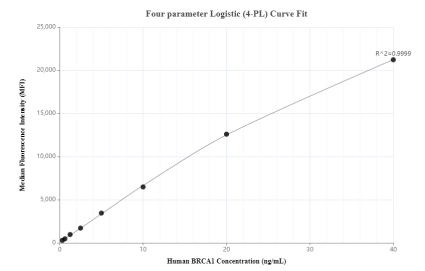
## Selected Validation Data



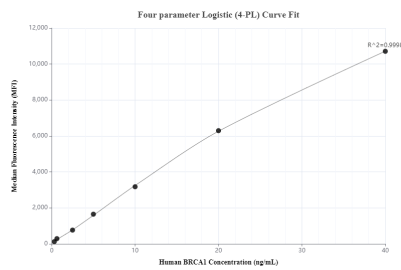
Sandwich ELISA standard curve of MP00425-2, Human BRCA1 Recombinant Matched Antibody Pair - PBS only. 83390-4-PBS was coated to a plate as the capture antibody and incubated with serial dilutions of standard Ag17946. 83390-2-PBS was HRP conjugated as the detection antibody. Range: 0.156-10 ng/mL.



The mean BRCA1 concentration was determined to be 6.24 ng/mL in HeLa cell extract based on a 1.20 mg/mL extract load, 5.16 ng/mL in MCF-7 cell extract based on a 1.20 mg/mL extract load and 5.29 ng/mL in HEK-293 cell extract based on a 1.20 mg/mL extract load.



Cytometric bead array standard curve of MP00425-2, BRCA1 Recombinant Matched Antibody Pair, PBS Only. Capture antibody: 83390-4-PBS. Detection antibody: 83390-2-PBS. Standard: Ag17946. Range: 0.313-40 ng/mL.



Cytometric bead array standard curve of MP00425-3, BRCA1 Recombinant Matched Antibody Pair, PBS Only. Capture antibody: 83390-2-PBS. Detection antibody: 83390-1-PBS. Standard: Ag17946. Range: 0.313-40 ng/mL.