

For Research Use Only

BRCA1 Recombinant antibody, PBS Only (Capture)

Catalog Number: 83390-4-PBS



Basic Information

Catalog Number: 83390-4-PBS	GenBank Accession Number: BC115037	Purification Method: Protein A purification
Size: 1 mg/ml	GeneID (NCBI): 672	CloneNo.: 240285A11
Source: Rabbit	UNIPROT ID: P38398	
Isotype: IgG	Full Name: breast cancer 1, early onset	
Immunogen Catalog Number: AG17946	Calculated MW: 1863 aa, 208 kDa	

Applications

Tested Applications:
Indirect ELISA, Cytometric bead array

Species Specificity:
human

Background Information

Storage

Storage:
Store at -80°C.
The product is shipped with ice packs. Upon receipt, store it immediately at -80°C

Storage Buffer:
PBS Only

For technical support and original validation data for this product please contact:

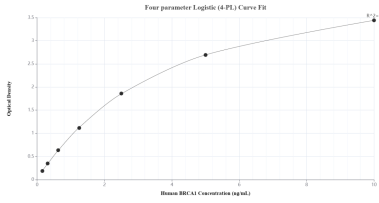
T: 4006900926

E: Proteintech-CN@ptglab.com

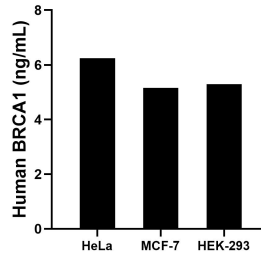
W: ptgcn.com

This product is exclusively available under Proteintech Group brand and is not available to purchase from any other manufacturer.

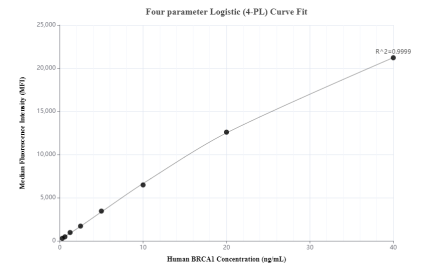
Selected Validation Data



Sandwich ELISA standard curve of MP00425-2, Human BRCA1 Recombinant Matched Antibody Pair - PBS only. 83390-4-PBS was coated to a plate as the capture antibody and incubated with serial dilutions of standard Ag17946. 83390-2-PBS was HRP conjugated as the detection antibody. Range: 0.156-10 ng/mL.



The mean BRCA1 concentration was determined to be 6.24 ng/mL in HeLa cell extract based on a 1.20 mg/mL extract load, 5.16 ng/mL in MCF-7 cell extract based on a 1.20 mg/mL extract load and 5.29 ng/mL in HEK-293 cell extract based on a 1.20 mg/mL extract load.



Cytometric bead array standard curve of MP00425-2, BRCA1 Recombinant Matched Antibody Pair, PBS Only. Capture antibody: 83390-4-PBS. Detection antibody: 83390-2-PBS. Standard: Ag17946. Range: 0.313-40 ng/mL.