

BRCA1 Recombinant antibody

Catalog Number: 83390-6-RR

Basic Information

Catalog Number: 83390-6-RR	GenBank Accession Number: BC115037	Purification Method: Protein A purification
Size: 1000 µg/ml	GeneID (NCBI): 672	CloneNo.: 240285E10
Source: Rabbit	UNIPROT ID: P38398	Recommended Dilutions: WB 1:5000-1:50000
Isotype: IgG	Full Name: breast cancer 1, early onset	
Immunogen Catalog Number: AG17946	Calculated MW: 1863 aa, 208 kDa	
	Observed MW: 300 kDa	

Applications

Tested Applications: WB, ELISA	Positive Controls: WB : HeLa cells, MCF-7 cells, HEK-293 cells, MDA-MB-231 cells, T-47D cells
Species Specificity: Human	

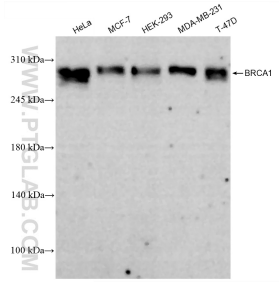
Background Information

BRCA1, also named as RNF53, plays a central role in DNA repair by facilitating cellular response to DNA repair. It is required for appropriate cell cycle arrests after ionizing irradiation in both the S-phase and the G2 phase of the cell cycle. The BRCA1-BARD1 heterodimer coordinates a diverse range of cellular pathways such as DNA damage repair, ubiquitination and transcriptional regulation to maintain genomic stability. BRCA1 acts by mediating ubiquitin E3 ligase activity that is required for its tumor suppressor function. It is involved in transcriptional regulation of P21 in response to DNA damage. BRCA1 is required for FANCD2 targeting to sites of DNA damage. It may function as a transcriptional regulator. BRCA1 inhibits lipid synthesis by binding to inactive phosphorylated ACACA and preventing its dephosphorylation. The antibody is specific to BRCA1. BRCA1 appears to produce multiple splice variants. BRCA1 is a nuclear protein with a molecular mass of 220 kDa. The present study describes the isolation and expression of two cDNAs of BRCA1, including a splice variant designated BRCA1D672-4095. BRCA1D672-4095 is generated by exclusion of exon 11 by in-frame splicing and produces a 97 kDa protein. In contrast to BRCA1, BRCA1D672-4095 localizes to the cytoplasm.

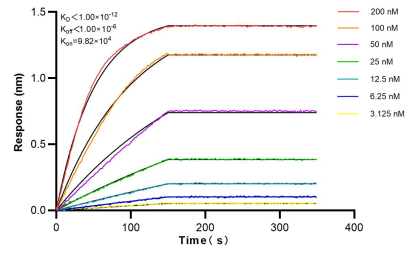
Storage

Storage:
Store at -20°C. Stable for one year after shipment.
Storage Buffer:
PBS with 0.02% sodium azide and 50% glycerol pH 7.3.
Aliquoting is unnecessary for -20°C storage

Selected Validation Data



Various lysates were subjected to SDS PAGE followed by western blot with 83390-6-RR (BRCA1 antibody) at dilution of 1:10000 incubated at room temperature for 1.5 hours.



Biolayer interferometry (BLI) kinetic assays of 83390-6-RR against Human BRCA1 were performed. The affinity constant is below 1 pM.