

For Research Use Only

GGTLC1 Recombinant antibody, PBS Only (Detector)



Catalog Number: 83392-3-PBS

Basic Information

| | | |
|---|--|---|
| Catalog Number: 83392-3-PBS | GenBank Accession Number: BC040904 | Purification Method: Protein A purification |
| Size: 1 mg/ml | GeneID (NCBI): 92086 | CloneNo.: 240297D9 |
| Source: Rabbit | UNIPROT ID: Q9BX51 | |
| Isotype: IgG | Full Name: gamma-glutamyltransferase light chain 1 | |
| Immunogen Catalog Number: AG11592 | Calculated MW: 225 aa, 24 kDa | |

Applications

Tested Applications:
WB, Indirect ELISA, Cytometric bead array

Species Specificity:
Human

Background Information

Storage

Storage:
Store at -80°C.
The product is shipped with ice packs. Upon receipt, store it immediately at -80°C
Storage Buffer:
PBS Only

For technical support and original validation data for this product please contact:

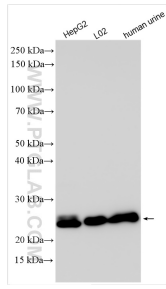
T: 4006900926

E: Proteintech-CN@ptglab.com

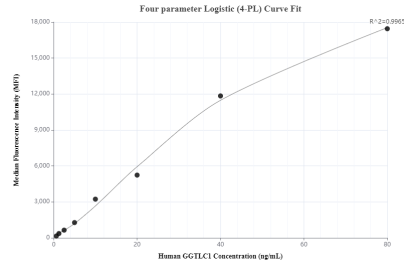
W: ptgcn.com

This product is exclusively available under Proteintech Group brand and is not available to purchase from any other manufacturer.

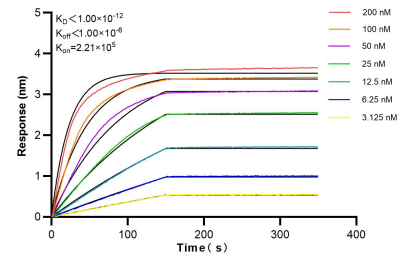
Selected Validation Data



Various lysates were subjected to SDS PAGE followed by western blot with 83392-3-RR (GGTLC1 antibody) at dilution of 1:1500 incubated at room temperature for 1.5 hours. This data was developed using the same antibody clone with 83392-3-PBS in a different storage buffer formulation.



Cytometric bead array standard curve of MP00433-2, GGTLC1 Recombinant Matched Antibody Pair, PBS Only. Capture antibody: 83392-2-PBS. Detection antibody: 83392-3-PBS. Standard: Ag11592. Range: 0.625-80 ng/mL.



Bi-layer interferometry (BLI) kinetic assays of 83392-3-RR against Human GGTLC1 were performed. The affinity constant is below 1 pM.