

For Research Use Only

# Mouse CD45/PTPRC Recombinant antibody, PBS Only (Detector)



Catalog Number: 83396-1-PBS

## Basic Information

Catalog Number:

83396-1-PBS

Size:

1 mg/ml

Source:

Rabbit

Isotype:

IgG

GenBank Accession Number:

NM\_001111316.2

GeneID (NCBI):

19264

UNIPROT ID:

P06800-4

Full Name:

protein tyrosine phosphatase, receptor type, C

Calculated MW:

145 kDa

Purification Method:

Protein A purification

CloneNo.:

240356C11

## Applications

Tested Applications:

Indirect ELISA, Cytometric bead array

Species Specificity:

Mouse

## Background Information

### Storage

Storage:

Store at -80°C.

Storage Buffer:

PBS Only

For technical support and original validation data for this product please contact:

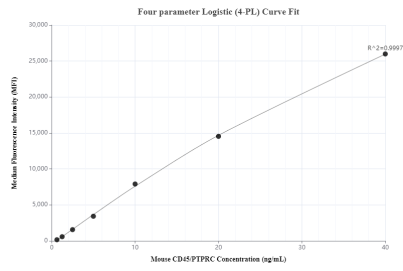
T: 4006900926

E: [Proteintech-CN@ptglab.com](mailto:Proteintech-CN@ptglab.com)

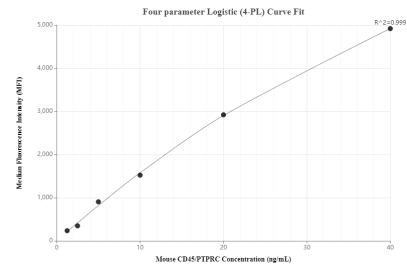
W: [ptgcn.com](http://ptgcn.com)

This product is exclusively available under Proteintech Group brand and is not available to purchase from any other manufacturer.

## Selected Validation Data



Cytometric bead array standard curve of MP00412-1, MOUSE CD45/PTPRC Recombinant Matched Antibody Pair, PBS Only. Capture antibody: 83396-3-PBS. Detection antibody: 83396-1-PBS. Standard: Eg0845. Range: 0.625-40 ng/mL



Cytometric bead array standard curve of MP00412-2, MOUSE CD45/PTPRC Recombinant Matched Antibody Pair, PBS Only. Capture antibody: 83396-4-PBS. Detection antibody: 83396-1-PBS. Standard: Eg0845. Range: 1.25-40 ng/mL