

For Research Use Only

SREBF2 Recombinant antibody

Catalog Number: 83403-1-RR



Basic Information

Catalog Number: 83403-1-RR	GenBank Accession Number: BC056158	Purification Method: Protein A purification
Size: 1000 µg/ml	GeneID (NCBI): 6721	CloneNo.: 240451A12
Source: Rabbit	UNIPROT ID: Q12772	Recommended Dilutions: IF 1:125-1:500
Isotype: IgG	Full Name: sterol regulatory element binding transcription factor 2	
Immunogen Catalog Number: AG28205	Calculated MW: 124 kDa	

Applications

Tested Applications: IF/ICC, ELISA	Positive Controls: IF : HepG2 cells,
Species Specificity: Human	

Background Information

SREBF2, also named as BHLHD2, is a 1141 amino acid protein, which contains 1 bHLH domain and belongs to the SREBP family. SREBF2 localizes in the endoplasmic reticulum membrane and is ubiquitously expressed in adult and fetal tissues. SREBF2 as a transcriptional activator is required for lipid homeostasis.

Storage

Storage:
Store at -20°C. Stable for one year after shipment.
Storage Buffer:
PBS with 0.02% sodium azide and 50% glycerol pH 7.3.
Aliquoting is unnecessary for -20°C storage

For technical support and original validation data for this product please contact:

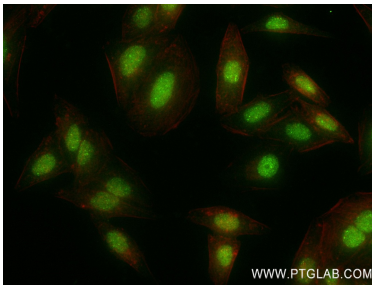
T: 4006900926

E: Proteintech-CN@ptglab.com

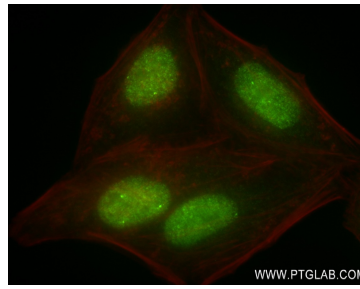
W: ptgcn.com

This product is exclusively available under Proteintech Group brand and is not available to purchase from any other manufacturer.

Selected Validation Data



Immunofluorescent analysis of (4% PFA) fixed HepG2 cells using SREBF2 antibody (83403-1-RR, Clone: 240451A12) at dilution of 1:250 and CoraLite®488-Conjugated AffiniPure Goat Anti-Rabbit IgG(H+L) (SA00013-2), CL594-Phalloidin (red).



Immunofluorescent analysis of (4% PFA) fixed HepG2 cells using SREBF2 antibody (83403-1-RR, Clone: 240451A12) at dilution of 1:250 and CoraLite®488-Conjugated AffiniPure Goat Anti-Rabbit IgG(H+L) (SA00013-2), CL594-Phalloidin (red).