

For Research Use Only

# SLC2A6 Recombinant antibody, PBS Only (Capture)



Catalog Number: 83406-1-PBS

## Basic Information

Catalog Number:

83406-1-PBS

Size:

1 mg/ml

Source:

Rabbit

Isotype:

IgG

Immunogen Catalog Number:

AG18481

GenBank Accession Number:

BC013740

GeneID (NCBI):

11182

UNIPROT ID:

Q9UGQ3

Full Name:

solute carrier family 2 (facilitated glucose transporter), member 6

Calculated MW:

55 kDa

Purification Method:

Protein A purification

CloneNo.:

240388E4

## Applications

Tested Applications:

Indirect ELISA, Cytometric bead array

Species Specificity:

Human

## Background Information

### Storage

Storage:

Store at -80°C.

Storage Buffer:

PBS Only

For technical support and original validation data for this product please contact:

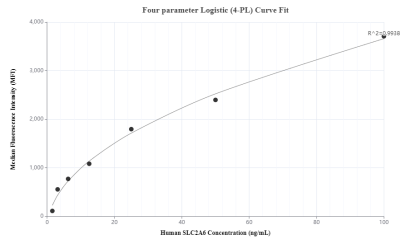
T: 4006900926

E: [Proteintech-CN@ptglab.com](mailto:Proteintech-CN@ptglab.com)

W: [ptgcn.com](http://ptgcn.com)

This product is exclusively available under Proteintech Group brand and is not available to purchase from any other manufacturer.

## Selected Validation Data



Cytometric bead array standard curve of MP00414-1, SLC2A6 Recombinant Matched Antibody Pair, PBS Only. Capture antibody: 83406-1-PBS. Detection antibody: 83406-3-PBS. Standard: Ag18481. Range: 1.56-100 ng/mL