

For Research Use Only

# Mouse Osteopontin Recombinant antibody, PBS Only



Catalog Number: 83413-6-PBS

## Basic Information

Catalog Number:

83413-6-PBS

Size:

1 mg/ml

Source:

Rabbit

Isotype:

IgG

GenBank Accession Number:

NM\_001204233.1

GeneID (NCBI):

20750

UNIPROT ID:

Q547B5

Full Name:

secreted phosphoprotein 1

Calculated MW:

32kd

Purification Method:

Protein A purification

CloneNo.:

240250A1

## Applications

Tested Applications:

WB, IF/ICC, ELISA

Species Specificity:

mouse

## Background Information

### Storage

Storage:

Store at -80°C.

The product is shipped with ice packs. Upon receipt, store it immediately at -80°C

Storage Buffer:

PBS Only

For technical support and original validation data for this product please contact:

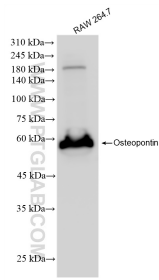
T: 4006900926

E: [Proteintech-CN@ptglab.com](mailto:Proteintech-CN@ptglab.com)

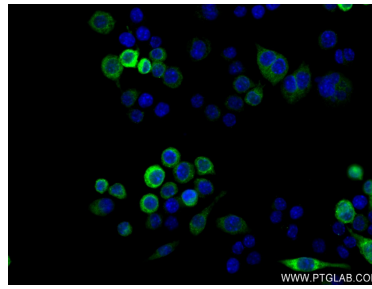
W: [ptgcn.com](http://ptgcn.com)

This product is exclusively available under Proteintech Group brand and is not available to purchase from any other manufacturer.

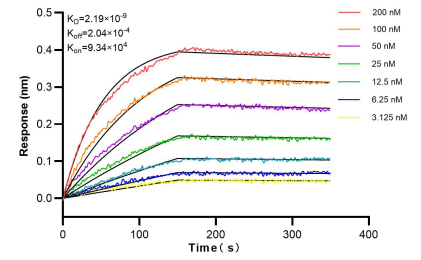
## Selected Validation Data



RAW 264.7 cells were subjected to SDS PAGE followed by western blot with 83413-6-RR (Osteopontin antibody) at dilution of 1:10000 incubated at room temperature for 1.5 hours. This data was developed using the same antibody clone with 83413-6-PBS in a different storage buffer formulation.



Immunofluorescent analysis of (4% PFA) fixed LPS and Brefeldin A treated RAW 264.7 cells using Osteopontin antibody (83413-6-RR, Clone: 240250A1 ) at dilution of 1:250 and CoraLite®488-Conjugated AffiniPure Goat Anti-Rabbit IgG(H+L) (SA00013-2). This data was developed using the same antibody clone with 83413-6-PBS in a different storage buffer formulation.



Bi-layer interferometry (BLI) kinetic assays of 83413-6-RR against Mouse Osteopontin were performed. The affinity constant is 2.19 nM.