

For Research Use Only

LBP Recombinant antibody, PBS Only (Capture/Detector)

Catalog Number: 83427-2-PBS



Basic Information

Catalog Number: 83427-2-PBS	GenBank Accession Number: NM_004139.4	Purification Method: Protein A purification
Size: 1 mg/ml	GeneID (NCBI): 3929	CloneNo.: 241106D3
Source: Rabbit	UNIPROT ID: P18428	
Isotype: IgG	Full Name: lipopolysaccharide binding protein	
	Calculated MW: 53KD	

Applications

Tested Applications:
Cytometric bead array, Sandwich ELISA, Indirect ELISA,
Sample test

Species Specificity:
human

Background Information

Storage

Storage:
Store at -80°C.
The product is shipped with ice packs. Upon receipt, store it immediately at -80°C

Storage Buffer:
PBS Only

For technical support and original validation data for this product please contact:

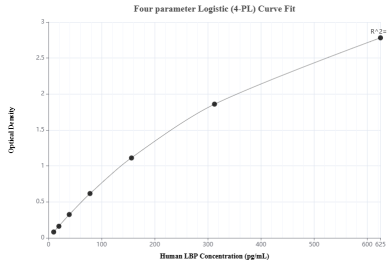
T: 4006900926

E: Proteintech-CN@ptglab.com

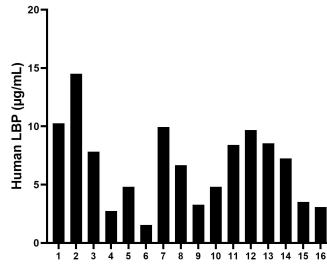
W: ptgcn.com

This product is exclusively available under Proteintech Group brand and is not available to purchase from any other manufacturer.

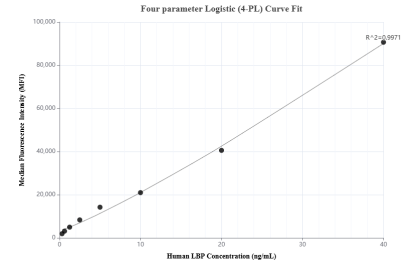
Selected Validation Data



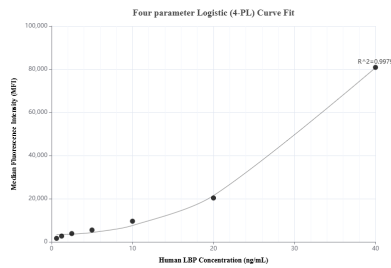
Sandwich ELISA standard curve of MP00906-4, Human LBP Recombinant Matched Antibody Pair - PBS only. 83427-4-PBS was coated to a plate as the capture antibody and incubated with serial dilutions of standard Eg0651. 83427-2-PBS was HRP conjugated as the detection antibody. Range: 9.77-625 µg/mL



Serum of sixteen individual healthy human donors was measured. The human LBP concentration of detected samples was determined to be 6.7 µg/mL with a range of 1.5 - 14.5 µg/mL.



Cytometric bead array standard curve of MP00906-1, LBP Recombinant Matched Antibody Pair, PBS Only. Capture antibody: 83427-2-PBS. Detection antibody: 83427-4-PBS. Standard: Eg0651. Range: 0.313-40 ng/mL



Cytometric bead array standard curve of MP00906-2, LBP Recombinant Matched Antibody Pair, PBS Only. Capture antibody: 83427-3-PBS. Detection antibody: 83427-2-PBS. Standard: Eg0651. Range: 0.625-40 ng/mL