

For Research Use Only

POLR2H Recombinant antibody

Catalog Number: 83439-1-RR



Basic Information

Catalog Number: 83439-1-RR	GenBank Accession Number: BC000739	Purification Method: Protein A purification
Size: 900 µg/ml	GeneID (NCBI): 5437	CloneNo.: 240410F9
Source: Rabbit	UNIPROT ID: P52434	Recommended Dilutions: WB 1:5000-1:50000
Isotype: IgG	Full Name: polymerase (RNA) II (DNA directed) polypeptide H	
Immunogen Catalog Number: AG7166	Calculated MW: 17 kDa	
	Observed MW: 15-17 kDa	

Applications

Tested Applications: WB, ELISA	Positive Controls: WB : HeLa cells, HEK-293 cells, HL-60 cells, HepG2 cells, NIH/3T3 cells, Jurkat cells, SH-SY5Y cells
Species Specificity: Human, mouse	

Background Information

POLR2H, also known as hRPB8, is a 150 amino acid protein, which localizes in nucleolus and is expressed in 228 organ(s), highest expression level in mucosa of transverse colon. POLR2H. POLR2H is a DNA-dependent RNA polymerase catalyzes the transcription of DNA into RNA using the four ribonucleoside triphosphates as substrates. POLR2H is a common component of RNA polymerases I, II and III which synthesize ribosomal RNA precursors, mRNA precursors and many functional non-coding RNAs, and small RNAs, such as 5S rRNA and tRNAs, respectively

Storage

Storage:
Store at -20°C. Stable for one year after shipment.
Storage Buffer:
PBS with 0.02% sodium azide and 50% glycerol pH 7.3.
Aliquoting is unnecessary for -20°C storage

For technical support and original validation data for this product please contact:

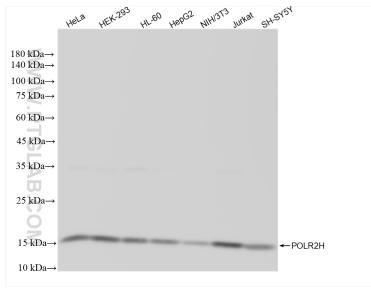
T: 4006900926

E: Proteintech-CN@ptglab.com

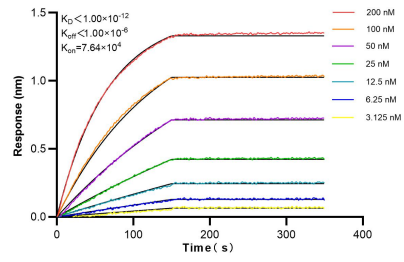
W: ptgcn.com

This product is exclusively available under Proteintech Group brand and is not available to purchase from any other manufacturer.

Selected Validation Data



Various lysates were subjected to SDS PAGE followed by western blot with 83439-1-RR (POLR2H antibody) at dilution of 1:10000 incubated at room temperature for 1.5 hours.



Biolayer interferometry (BLI) kinetic assays of 83439-1-RR against Human POLR2H were performed. The affinity constant is below 1 pM.