

For Research Use Only

TMEM126A Recombinant antibody

Catalog Number:83440-2-RR



Basic Information

Catalog Number: 83440-2-RR	GenBank Accession Number: BC007875	Purification Method: Protein A purification
Size: 1000 ug/ml	GeneID (NCBI): 84233	CloneNo.: 240425A11
Source: Rabbit	UNIPROT ID: Q9H061	Recommended Dilutions: WB 1:2000-1:10000 IF/ICC 1:500-1:2000
Isotype: IgG	Full Name: transmembrane protein 126A	
Immunogen Catalog Number: AG14705	Calculated MW: 195 aa, 22 kDa	
	Observed MW: 20-25 kDa	

Applications

Tested Applications: WB, IF/ICC, ELISA	Positive Controls:
Species Specificity: human	WB : T-47D cells, HeLa cells, MCF-7 cells, U-251 cells, U2OS cells, human placenta tissue
	IF/ICC : HeLa cells,

Background Information

TMEM126A is a mitochondrial inner membrane protein that is enriched in the cristae. TMEM126A is necessary for Complex I assembly or stability. Complex I (CI) is the largest enzyme of the mitochondrial respiratory chain, and its defects are the main cause of mitochondrial disease.

Storage

Storage:
Store at -20°C. Stable for one year after shipment.
Storage Buffer:
PBS with 0.02% sodium azide and 50% glycerol pH 7.3.
Aliquoting is unnecessary for -20°C storage

For technical support and original validation data for this product please contact:

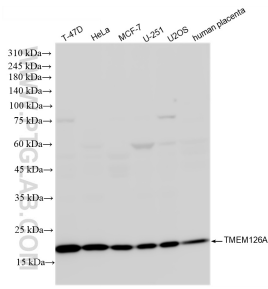
T: 4006900926

E: Proteintech-CN@ptglab.com

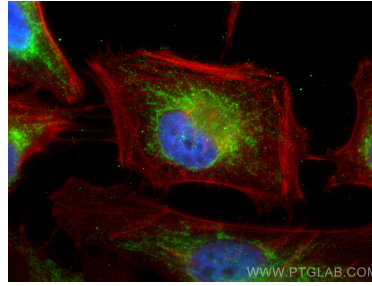
W: ptgcn.com

This product is exclusively available under Proteintech Group brand and is not available to purchase from any other manufacturer.

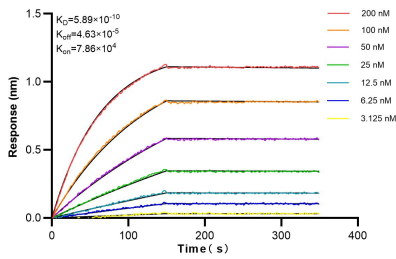
Selected Validation Data



Various lysates were subjected to SDS PAGE followed by western blot with 83440-2-RR (TMEM126A antibody) at dilution of 1:5000 incubated at room temperature for 1.5 hours.



Immunofluorescent analysis of (4% PFA) fixed HeLa cells using TMEM126A antibody (83440-2-RR, Clone: 240425A11) at dilution of 1:1000 and Multi-rAb CoraLite® Plus 488-Goat Anti-Rabbit Recombinant Secondary Antibody (H+L) (RGAR002), CL594-Phalloidin (red).



Biolayer interferometry (BLI) kinetic assays of 83440-2-RR against Human TMEM126A were performed. The affinity constant is 0.589 nM.

1×10^6 HeLa cells were intracellularly stained with 0.25 μ g TMEM126A Recombinant antibody (83440-2-RR, Clone:240425A11) and CoraLite®488-Conjugated Goat Anti-Rabbit IgG(H+L) (SA00013-2) (red), or 0.25 μ g Rabbit IgG Isotype Control Recombinant Antibody (98136-1-RR, Clone: 240953C9) (blue). Cells were fixed with 4% PFA and permeabilized with Flow Cytometry Perm Buffer (PF00011-C).