

For Research Use Only

ESR2 Recombinant antibody, PBS Only (Capture/Detector)



Catalog Number: 83447-3-PBS

Basic Information

Catalog Number: 83447-3-PBS	GenBank Accession Number: BC024181	Purification Method: Protein A purification
Size: 1 mg/ml	GeneID (NCBI): 2100	CloneNo.: 240412F2
Source: Rabbit	UNIPROT ID: Q92731	
Isotype: IgG	Full Name: estrogen receptor 2 (ER beta)	
Immunogen Catalog Number: AG5103	Calculated MW: 59 kDa	

Applications

Tested Applications:
IF, Indirect ELISA, Cytometric bead array

Species Specificity:
Human

Background Information

Storage

Storage:
Store at -80°C.
Storage Buffer:
PBS Only

For technical support and original validation data for this product please contact:

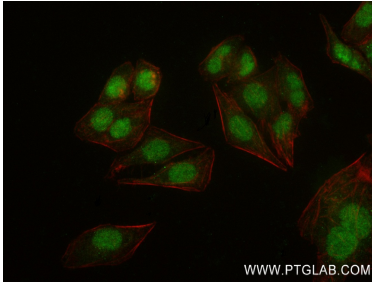
T: 4006900926

E: Proteintech-CN@ptglab.com

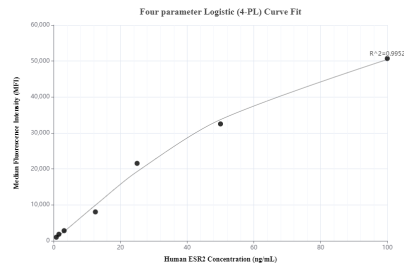
W: ptgcn.com

This product is exclusively available under Proteintech Group brand and is not available to purchase from any other manufacturer.

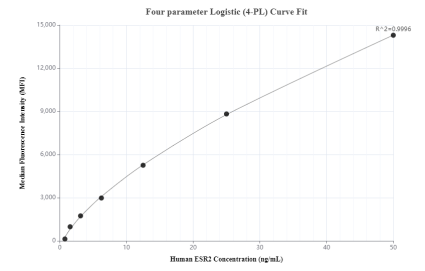
Selected Validation Data



Immunofluorescent analysis of (4% PFA) fixed HepG2 cells using ESR2 antibody (83447-3-RR, Clone: 240412F2) at dilution of 1:800 and Multi-rAb CoraLite® Plus 488-Goat Anti-Rabbit Recombinant Secondary Antibody (H+L) (RGAR002), CL594-Phalloidin (red). This data was developed using the same antibody clone with 83447-3-PBS in a different storage buffer formulation.



Cytometric bead array standard curve of MP00441-1, ESR2 Recombinant Matched Antibody Pair, PBS Only. Capture antibody: 83447-2-PBS. Detection antibody: 83447-3-PBS. Standard: Ag5103. Range: 0.781-100 ng/mL



Cytometric bead array standard curve of MP00441-2, ESR2 Recombinant Matched Antibody Pair, PBS Only. Capture antibody: 83447-3-PBS. Detection antibody: 83447-1-PBS. Standard: Ag5103. Range: 0.781-50 ng/mL