

For Research Use Only

ESR2 Recombinant antibody, PBS Only (Capture)

Catalog Number: 83447-4-PBS



Basic Information

Catalog Number: 83447-4-PBS	GenBank Accession Number: BC024181	Purification Method: Protein A purification
Size: 1 mg/ml	GeneID (NCBI): 2100	CloneNo.: 240412D5
Source: Rabbit	UNIPROT ID: Q92731	
Isotype: IgG	Full Name: estrogen receptor 2 (ER beta)	
Immunogen Catalog Number: AG5103	Calculated MW: 59 kDa	

Applications

Tested Applications:
Sandwich ELISA, Indirect ELISA, Sample test

Species Specificity:
human

Background Information

Storage

Storage:
Store at -80°C.
The product is shipped with ice packs. Upon receipt, store it immediately at -80°C

Storage Buffer:
PBS Only

For technical support and original validation data for this product please contact:

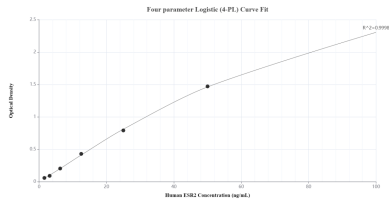
T: 4006900926

E: Proteintech-CN@ptglab.com

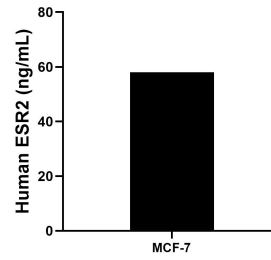
W: ptgcn.com

This product is exclusively available under Proteintech Group brand and is not available to purchase from any other manufacturer.

Selected Validation Data



Sandwich ELISA standard curve of MP00441-3, Human ESR2 Recombinant Matched Antibody Pair - PBS only. 83447-4-PBS was coated to a plate as the capture antibody and incubated with serial dilutions of standard Ag5103. 83447-2-PBS was HRP conjugated as the detection antibody. Range: 1.56-100 ng/mL



The mean ESR2 concentration was determined to be 58.05 ng/mL in MCF-7 cell extract based on a 4.30 mg/mL extract load.