

For Research Use Only

PLXDC2 Recombinant antibody

Catalog Number: 83449-4-RR



Basic Information

Catalog Number: 83449-4-RR	GenBank Accession Number: BC012885	Purification Method: Protein A purification
Size: 1000 ug/ml	GeneID (NCBI): 84898	CloneNo.: 240174A11
Source: Rabbit	UNIPROT ID: Q6UX71	Recommended Dilutions: WB 1:5000-1:50000 IHC 1:400-1:1600
Isotype: IgG	Full Name: plexin domain containing 2	
Immunogen Catalog Number: AG2940	Calculated MW: 480 aa, 54 kDa	
	Observed MW: 54 kDa	

Applications

Tested Applications:
WB, IHC, ELISA

Species Specificity:
human

Note-IHC: suggested antigen retrieval with TE buffer pH 9.0; (*) Alternatively, antigen retrieval may be performed with citrate buffer pH 6.0

Positive Controls:

WB : MKN-45 cells,

IHC : human intrahepatic cholangiocarcinoma tissue,

Background Information

PLXDC2 (Plexin-domain containing 2), also named tumor endothelial marker 7-related protein (TEM7R), is a single-pass type I membrane protein with some homology to nidogen and to plexins. PLXDC2 is located in tumor endothelium and plays a role in tumor angiogenesis. Three isoforms of PLXDC2 produced by alternative splicing have been described. Recent finding revealed that PLXDC2 is a mitogen for neural progenitors and functions as a novel regulator of the development of different brain regions, suggesting its role in coordinating proliferation and differentiation in the developing nervous system.

Storage

Storage:

Store at -20°C. Stable for one year after shipment.

Storage Buffer:

PBS with 0.02% sodium azide and 50% glycerol pH 7.3.

Aliquoting is unnecessary for -20°C storage

For technical support and original validation data for this product please contact:

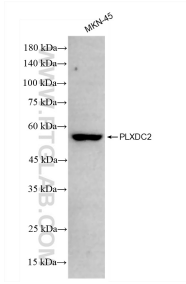
T: 4006900926

E: Proteintech-CN@ptglab.com

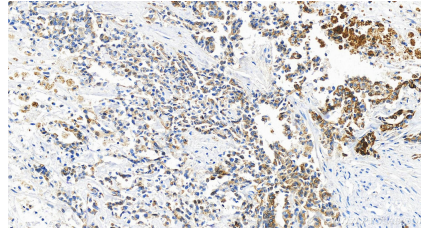
W: ptgcn.com

This product is exclusively available under Proteintech Group brand and is not available to purchase from any other manufacturer.

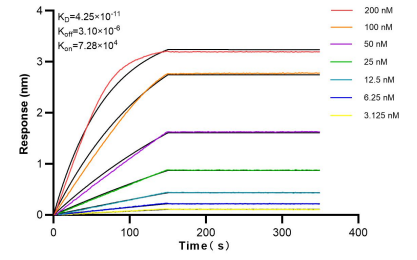
Selected Validation Data



MKN-45 cells were subjected to SDS PAGE followed by western blot with 83449-4-RR (PLXDC2 antibody) at dilution of 1:20000 incubated at room temperature for 1.5 hours.



Immunohistochemical analysis of paraffin-embedded human intrahepatic cholangiocarcinoma tissue slide using 83449-4-RR (PLXDC2 antibody) at dilution of 1:800 (under 20x lens). Heat mediated antigen retrieval with Tris-EDTA buffer (pH 9.0).



Bi-layer interferometry (BLI) kinetic assays of 83449-4-RR against Human PLXDC2 were performed. The affinity constant is 42.5 pM.