

For Research Use Only

# GRIN2A Recombinant antibody, PBS Only (Detector)



Catalog Number: 83465-2-PBS

## Basic Information

<b>Catalog Number:</b> 83465-2-PBS	<b>GenBank Accession Number:</b> NM_000833	<b>Purification Method:</b> Protein A purification
<b>Size:</b> 1 mg/ml	<b>GeneID (NCBI):</b> 2903	<b>CloneNo.:</b> 240445D4
<b>Source:</b> Rabbit	<b>UNIPROT ID:</b> Q12879	
<b>Isotype:</b> IgG	<b>Full Name:</b> glutamate receptor, ionotropic, N-methyl D-aspartate 2A	
<b>Immunogen Catalog Number:</b> AG29101	<b>Calculated MW:</b> 165 kDa	

## Applications

**Tested Applications:**  
WB, Indirect ELISA, Cytometric bead array

**Species Specificity:**  
Human

## Background Information

### Storage

**Storage:**  
Store at -80°C.

**Storage Buffer:**  
PBS Only

For technical support and original validation data for this product please contact:

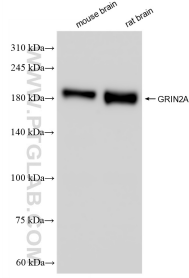
T: 4006900926

E: [Proteintech-CN@ptglab.com](mailto:Proteintech-CN@ptglab.com)

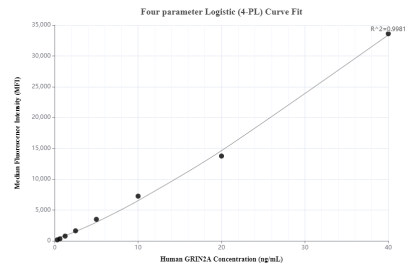
W: [ptgcn.com](http://ptgcn.com)

This product is exclusively available under Proteintech Group brand and is not available to purchase from any other manufacturer.

## Selected Validation Data



Various lysates were subjected to SDS PAGE followed by western blot with 83465-2-RR (GRIN2A antibody) at dilution of 1:10000 incubated at room temperature for 1.5 hours. This data was developed using the same antibody clone with 83465-2-PBS in a different storage buffer formulation.



Cytometric bead array standard curve of MP00461-2, GRIN2A Recombinant Matched Antibody Pair, PBS Only. Capture antibody: 83465-4-PBS. Detection antibody: 83465-2-PBS. Standard: Ag29101. Range: 0.313-40 ng/mL.