

For Research Use Only

ELAC2 Recombinant antibody

Catalog Number: 83468-6-RR



Basic Information

Catalog Number: 83468-6-RR	GenBank Accession Number: BC004158	Purification Method: Protein A purification
Size: 1000 µg/ml	GeneID (NCBI): 60528	CloneNo.: 240487B6
Source: Rabbit	UNIPROT ID: Q9BQ52	Recommended Dilutions: WB 1:5000-1:50000
Isotype: IgG	Full Name: elaC homolog 2 (E. coli)	
Immunogen Catalog Number: AG0105	Calculated MW: 92 kDa	
	Observed MW: 97 kDa	

Applications

Tested Applications: WB, FC (Intra), ELISA	Positive Controls: WB : HEK-293 cells, HeLa cells, MCF-7 cells, Raji cells, DU 145 cells
Species Specificity: human	

Background Information

Putative prostate cancer susceptibility protein (ELAC2) is encoded by HPC2/ELAC2 gene. HPC2 is a potential prostate cancer predisposition gene playing a role in genetic susceptibility to prostate cancer. It is a zinc phosphodiesterase, which displays some tRNA 3'-processing endonuclease activity and probably involved in tRNA maturation, by removing a 3'-trailer from precursor tRNA. Defects in ELAC2 may be a cause of susceptibility to prostate cancer (PC).

Storage

Storage:
Store at -20°C. Stable for one year after shipment.
Storage Buffer:
PBS with 0.02% sodium azide and 50% glycerol pH 7.3.
Aliquoting is unnecessary for -20°C storage

For technical support and original validation data for this product please contact:

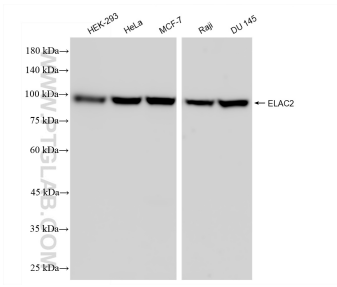
T: 4006900926

E: Proteintech-CN@ptglab.com

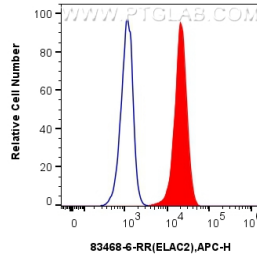
W: ptgcn.com

This product is exclusively available under Proteintech Group brand and is not available to purchase from any other manufacturer.

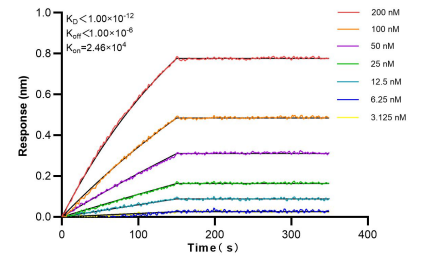
Selected Validation Data



Various lysates were subjected to SDS PAGE followed by western blot with 83468-6-RR (ELAC2 antibody) at dilution of 1:10000 incubated at room temperature for 1.5 hours.



1x10⁶ A431 cells were intracellularly stained with 0.25 ug ELAC2 Recombinant antibody (83468-6-RR, Clone:240487B6) and APC-Conjugated AffiniPure Goat Anti-Rabbit IgG(H+L)(red), or 0.25 ug Isotype Control (blue). Cells were fixed and permeabilized with Transcription Factor Staining Buffer Kit (PF00011).



Bi-layer interferometry (BLI) kinetic assays of 83468-6-RR against Human ELAC2 were performed. The affinity constant is below 1 pM.