

For Research Use Only

MIG6; ERRFI1 Recombinant antibody, PBS Only (Detector)



Catalog Number: 83475-2-PBS

Basic Information

Catalog Number: 83475-2-PBS	GenBank Accession Number: NM_018948	Purification Method: Protein A purification
Size: 1 mg/ml	GeneID (NCBI): 54206	CloneNo.: 240447C3
Source: Rabbit	UNIPROT ID: Q9UJM3	
Isotype: IgG	Full Name: ERBB receptor feedback inhibitor 1	
Immunogen Catalog Number: AG33341	Calculated MW: 51kd	

Applications

Tested Applications:
WB, Indirect ELISA, Cytometric bead array

Species Specificity:
Human

Background Information

Storage

Storage:
Store at -80°C.
The product is shipped with ice packs. Upon receipt, store it immediately at -80°C

Storage Buffer:
PBS Only

For technical support and original validation data for this product please contact:

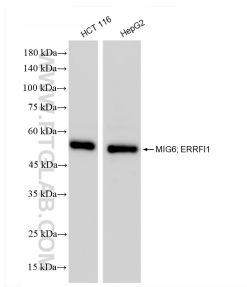
T: 4006900926

E: Proteintech-CN@ptglab.com

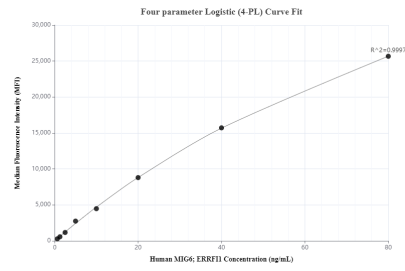
W: ptgcn.com

This product is exclusively available under Proteintech Group brand and is not available to purchase from any other manufacturer.

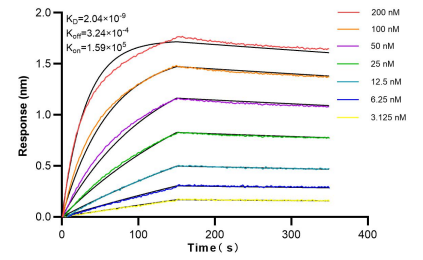
Selected Validation Data



Various lysates were subjected to SDS PAGE followed by western blot with 83475-2-RR (MIG6; ERRF1 antibody) at dilution of 1:10000 incubated at room temperature for 1.5 hours. This data was developed using the same antibody clone with 83475-2-PBS in a different storage buffer formulation.



Cytometric bead array standard curve of MP00464-3, MIG6; ERRF1 Recombinant Matched Antibody Pair, PBS Only. Capture antibody: 83475-1-PBS. Detection antibody: 83475-2-PBS. Standard: Ag33341. Range: 0.625-80 ng/mL.



Bi-layer interferometry (BLI) kinetic assays of 83475-2-RR against Human MIG6; ERRF1 were performed. The affinity constant is 2.04 nM.