

For Research Use Only

RPP30 Recombinant antibody, PBS Only (Detector)

Catalog Number: 83481-5-PBS



Basic Information

Catalog Number: 83481-5-PBS	GenBank Accession Number: BC006991	Purification Method: Protein A purification
Size: 1 mg/ml	GeneID (NCBI): 10556	CloneNo.: 240468E4
Source: Rabbit	UNIPROT ID: P78346	
Isotype: IgG	Full Name: ribonuclease P/MRP 30kDa subunit	
Immunogen Catalog Number: AG8600	Calculated MW: 268 aa, 29 kDa	
	Observed MW: 30 kDa	

Applications

Tested Applications:
WB, IHC, IF/ICC, FC (Intra), Cytometric bead array,
Sandwich ELISA, Indirect ELISA, Sample test

Species Specificity:
human, mouse

Background Information

RPP30 is a part of multimeric ribonuclease P complex and ribonuclease MRP complex. It is also a component of the MRP ribonuclease complex, which cleaves pre-rRNA sequences.

Storage

Storage:
Store at -80°C.
The product is shipped with ice packs. Upon receipt, store it immediately at -80°C

Storage Buffer:
PBS Only

For technical support and original validation data for this product please contact:

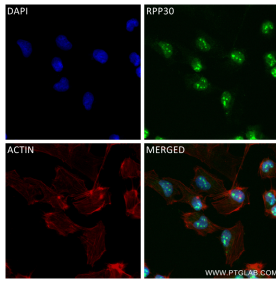
T: 4006900926

E: Proteintech-CN@ptglab.com

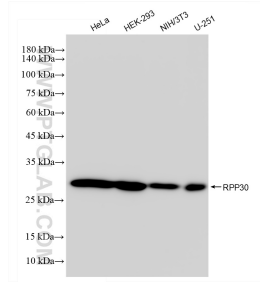
W: ptgcn.com

This product is exclusively available under Proteintech Group brand and is not available to purchase from any other manufacturer.

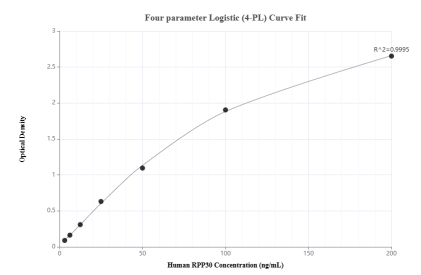
Selected Validation Data



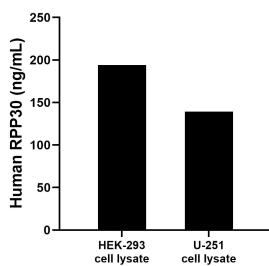
Immunofluorescent analysis of (4% PFA) fixed U-251 cells using RPP30 antibody (83481-5-RR, Clone: 240468E4) at dilution of 1:400 and CoraLite®488-Conjugated Goat Anti-Rabbit IgG(H+L) (SA00013-2), CL594-Phalloidin (red). This data was developed using the same antibody clone with 83481-5-PBS in a different storage buffer formulation.



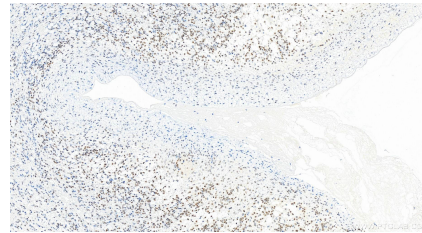
Various lysates were subjected to SDS PAGE followed by western blot with 83481-5-RR (RPP30 antibody) at dilution of 1:10000 incubated at room temperature for 1.5 hours. This data was developed using the same antibody clone with 83481-5-PBS in a different storage buffer formulation.



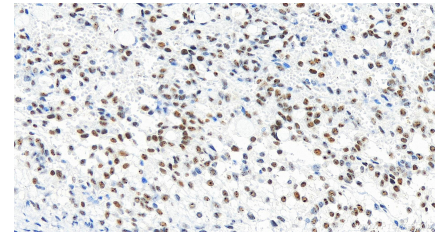
Sandwich ELISA standard curve of MP00472-1, Human RPP30 Recombinant Matched Antibody Pair - PBS only. 83481-2-PBS was coated to a plate as the capture antibody and incubated with serial dilutions of standard Ag8600. 83481-5-PBS was HRP conjugated as the detection antibody. Range: 3.13-200 ng/mL



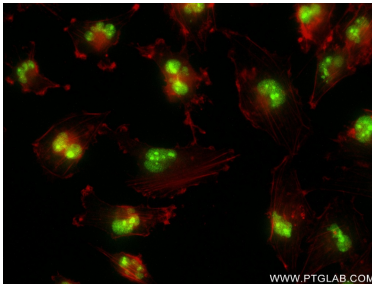
HEK-293 and U-251 cell lysate were measured. The human RPP30 concentration of detected samples was determined to be 194.20 ng/mL (based on a 1.2 mg/mL extract load) in HEK-293 cell lysate and 139.41 ng/mL (based on a 3.3 mg/mL extract load) in U-251 cell lysate.



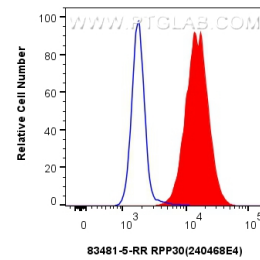
Immunohistochemical analysis of paraffin-embedded human ovary cancer tissue slide using 83481-5-RR (RPP30 antibody) at dilution of 1:1500 (under 20x lens). Heat mediated antigen retrieval with Tris-EDTA buffer (pH 9.0). This data was developed using the same antibody clone with 83481-5-PBS in a different storage buffer formulation.



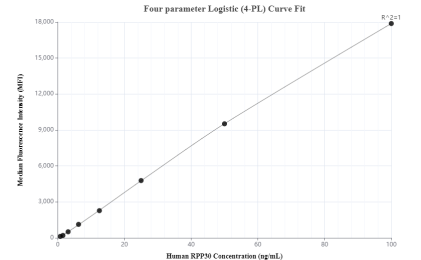
Immunohistochemical analysis of paraffin-embedded human ovary cancer tissue slide using 83481-5-RR (RPP30 antibody) at dilution of 1:1500 (under 20x lens). Heat mediated antigen retrieval with Tris-EDTA buffer (pH 9.0). This data was developed using the same antibody clone with 83481-5-PBS in a different storage buffer formulation.



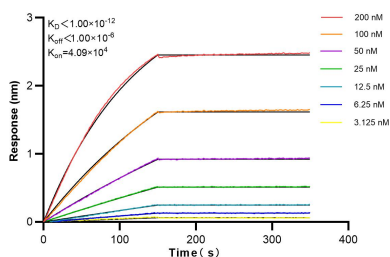
Immunofluorescent analysis of (4% PFA) fixed U-251 cells using RPP30 antibody (83481-5-RR, Clone: 240468E4) at dilution of 1:400 and CoraLite®488-Conjugated AffiniPure Goat Anti-Rabbit IgG(H+L) (SA00013-2), CL594-Phalloidin (red). This data was developed using the same antibody clone with 83481-5-PBS in a different storage buffer formulation.



1×10^6 U-251 cells were intracellularly stained with 0.25 ug RPP30 Recombinant antibody (83481-5-RR, Clone:240468E4) and CoraLite®488-Conjugated Goat Anti-Rabbit IgG(H+L) (SA00013-2)(red), or 0.25 ug Rabbit IgG Isotype Control Recombinant Antibody (98136-1-RR, Clone: 240953C9) (blue). Cells were fixed and permeabilized with Transcription Factor Staining Buffer Kit (PF00011). This data was developed using the same antibody clone with 83481-5-PBS in a



Cytometric bead array standard curve of MP00472-1, RPP30 Recombinant Matched Antibody Pair, PBS Only. Capture antibody: 83481-2-PBS. Detection antibody: 83481-5-PBS. Standard: Ag8600. Range: 0.78-100 ng/mL



$K_{12} < 1.00 \times 10^{-12}$
 $K_{off} < 1.00 \times 10^{-4}$
 $K_{on} = 4.09 \times 10^4$

Biolayer interferometry (BLI) kinetic assays of 83481-5-RR against Human RPP30 were performed. The affinity constant is below 1 pM.