

For Research Use Only

# NELF Recombinant antibody, PBS Only (Detector)

Catalog Number: 83490-2-PBS



## Basic Information

<b>Catalog Number:</b> 83490-2-PBS	<b>GenBank Accession Number:</b> BC016862	<b>Purification Method:</b> Protein A purification
<b>Size:</b> 1 mg/ml	<b>GeneID (NCBI):</b> 26012	<b>CloneNo.:</b> 240482G1
<b>Source:</b> Rabbit	<b>UNIPROT ID:</b> Q6X4W1	
<b>Isotype:</b> IgG	<b>Full Name:</b> nasal embryonic LHRH factor	
<b>Immunogen Catalog Number:</b> AG34902	<b>Calculated MW:</b> 507 aa, 56 kDa	

## Applications

**Tested Applications:**  
WB, Indirect ELISA, Cytometric bead array

**Species Specificity:**  
Human

## Background Information

### Storage

**Storage:**  
Store at -80°C.  
**The product is shipped with ice packs. Upon receipt, store it immediately at -80°C**

**Storage Buffer:**  
PBS Only

For technical support and original validation data for this product please contact:

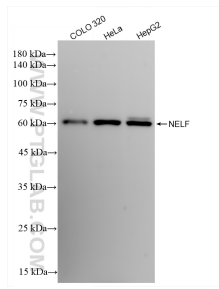
T: 4006900926

E: [Proteintech-CN@ptglab.com](mailto:Proteintech-CN@ptglab.com)

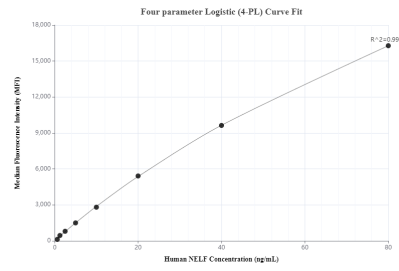
W: [ptgcn.com](http://ptgcn.com)

**This product is exclusively available under Proteintech Group brand and is not available to purchase from any other manufacturer.**

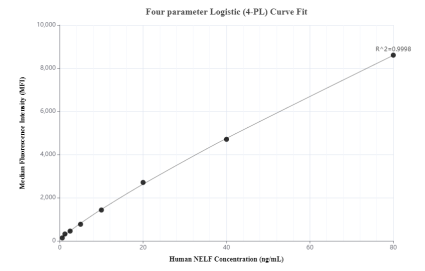
## Selected Validation Data



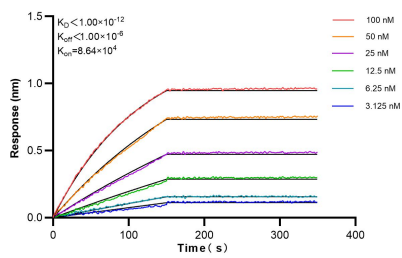
Various lysates were subjected to SDS PAGE followed by western blot with 83490-2-RR (NELF antibody) at dilution of 1:10000 incubated at room temperature for 1.5 hours. This data was developed using the same antibody clone with 83490-2-PBS in a different storage buffer formulation.



Cytometric bead array standard curve of MP00490-1, NELF Recombinant Matched Antibody Pair, PBS Only. Capture antibody: 83490-1-PBS. Detection antibody: 83490-2-PBS. Standard: Ag34902. Range: 0.625-80 ng/mL.



Cytometric bead array standard curve of MP00490-2, NELF Recombinant Matched Antibody Pair, PBS Only. Capture antibody: 83490-3-PBS. Detection antibody: 83490-2-PBS. Standard: Ag34902. Range: 0.625-80 ng/mL.



Biolayer interferometry (BLI) kinetic assays of 83490-2-RR against Human NELF were performed. The affinity constant is below 1 pM.